

## **Historic, Archive Document**

Do not assume content reflects current scientific knowledge, policies, or practices.



6273 1530

# Beautiful Gardens at Moderate Cost

Economic Collections  
Rec'd SEP 1 1930

## New Tulips

WHEN a new Tulip is produced in Holland, there is only one bulb of it in the world, and from that one bulb all the thousands which are required to supply the demands of the world have to be produced. Consequently, it takes a number of years before any new Tulip becomes plentiful. In the meantime the supplies are scarce and the prices higher than those of older varieties. But these modern new Tulips are worth a good deal more than the difference in price, and anyone who has seen them blooming in the fields in Holland, or in test-plots in this country, will agree that when they become plentiful the older varieties which we admire so much now will be entirely forgotten. They are larger, taller, and finer in every respect, with great flaring bowls of warm color yielding in splendor to no flower that grows.

### SUNDEW

A magnificent new Tulip which has created admiration and astonishment at the flower shows this spring. At the Philadelphia show, a large vase of it was surrounded at all times by an admiring throng. It is a most entrancing variety of noble size and rich glowing color. The long, heavy petals of smooth texture are lit with glowing rose-red, shaded somewhat darker, but the crowning feature is its frilled edges which give the impression of ruffling or fringing, giving the flower a character wholly distinct from any other. Its rich red color is greatly enhanced by a sparkling blue base and bright golden yellow anthers. A gem for potting or for growing in the pleasure garden. It blooms with the Darwin Tulips in May on stately, tall stems.

Per 10 bulbs \$2.50

SEE PAGE 6 FOR OTHER NEW TULIPS

Schenley Gardens

Incorporated

CHESWICK, PENNA.



SUNDEW TULIPS

# Beautiful Gardens *~*

FROM GENUINE

## DUTCH BULBS

A GARDEN is limited for space and cannot afford to harbor anything which does not yield richly in beauty and satisfaction.

You may rely on the Dutch Tulips and other Dutch bulbs to give you generous returns in flowers for the money you invest in them. The ever-increasing popularity of the Dutch bulbs is proof of this. Beginning during the fifteenth century, the distribution of Dutch bulbs has become world-wide, until today countless millions are used each year by many civilized nations.

America takes about 25 per cent of the total production; England, France, Germany, and the Scandinavian countries take 75 per cent, of which England takes more than half, or about 40 per cent of the total yearly crop.

Considering this rather startling fact, we find that the per capita purchase of Dutch bulbs in England, with a population of forty million, is almost five times that in America. If we further consider that England is famous for its gardens and flowers, and that England herself produces the very finest garden materials for the amateur gardener, then it is unquestionably true that the garden-loving public of England considers the Tulip a superlative product. The American gardeners

would do well to follow this good example.

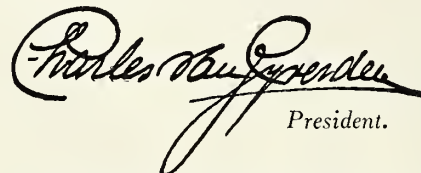
We offer only the finest Dutch bulbs that we can get, and select all our bulbs from the new crop at the growers' warehouses in Holland. We maintain an extensive trial-garden where samples of practically all known varieties of Dutch bulbs are tested under ordinary average American conditions. This gives us an intimate knowledge of the Dutch bulbs and is a guarantee that every variety we offer to you is worthy, lovely, and desirable, and will produce all that you hope for when you plant it in your garden.

We guarantee to replace, gratis, any bulb purchased from us which does not produce a perfect flower under ordinary care.

Delivery will be made immediately upon receipt of your bulbs from abroad, usually about October 1.

Our prices include delivery to your nearest Express Office or Post Office.

Our terms are: Cash with Order.

  
President.

SCHENLEY GARDENS, Inc.  
Cheswick, Penna.



A fine border planting of Darwin and Breeder Tulips

## Color Scheme for a Long Border Planting of Tulips and How to Plant Them for Best Effect

IT has come to our attention that a great number of gardeners are confronted by the problem of how to make an attractive color scheme for a border planting of Tulips.

To assist our many friends who are interested we have arranged below a border and recommended the varieties

to plant it. This selection has been taken from the exhibitions and may be depended upon to create a very beautiful color harmony. Only the best varieties have been used.

The price of the whole collection is only \$15. Each variety is packed separately.

### A Border Bed 30 by 2 Feet

30 Flamingo	30 Baronne de la Tonnaye	30 Euterpe	30 Miss Willmott	30 Jaune d'Œuf	30 Prince of Netherlands	30 Clara Butt	30 Bronze Queen
----------------	-----------------------------	---------------	---------------------	-------------------	-----------------------------	------------------	--------------------

The above bed (30 by 2 feet) will hold 240 bulbs if they are planted 6 inches apart each way. This is the proper spacing of bulbs for finest display. They may be planted farther apart but this will detract proportionately from the effect

For this bed the following selection of Tulips may be planted, in the order given, where a beautiful blending of brilliant colors is desired.

1. 30 Darwin Tulips, Flamingo (shell-pink).
2. 30 Darwin Tulips, Baronne de la Tonnaye (deep pink).
3. 30 Darwin Tulips, Euterpe (lavender).
4. 30 Cottage Tulips, Miss Willmott (pale yellow).
5. 30 Breeder Tulips, Jaune d'Œuf (lively yellow and lilac).
6. 30 Darwin Tulips, Prince of Netherlands (carmine).
7. 30 Darwin Tulips, Clara Butt (salmon-pink).
8. 30 Breeder Tulips, Bronze Queen (soft golden bronze).

THE PRICE OF THE COMPLETE COLLECTION OF THE ABOVE 240 BULBS, IN 8 VARIETIES, IS ONLY **\$15**

IN ORDERING, ASK FOR COLLECTION A

## SPECIAL OFFERS

### Collection No. 1

5 bulbs each of the 4 varieties shown on this page (20 bulbs in all)

**\$3.50**

### Collection No. 2

10 bulbs of each (40 in all)

**\$6.50**

### Collection No. 3

25 bulbs of each (100 in all)

**\$16**

## Four Very Wonderful Tulips

### 1. King George V DARWIN

Intense Imperial pink, with giant flowers of remarkably handsome form.

**\$1.60 for 10  
\$15 per 100**

### 2. Alaska COTTAGE

Long, extremely slender flowers of Lily type. Soft yellow throughout.

**\$3.50 for 10  
\$34 per 100**

### 3. Salomon BREEDER

One of the loveliest shades of lavender-lilac. Exquisite in tone and shape.

**\$1 for 10  
\$9 per 100**

### 4. Afterglow DARWIN

Rich rose-red and crimson, shaded with fiery old-gold at edges of petals.

**\$1 for 10  
\$9 per 100**





### SPECIAL OFFERS

#### Collection No. 4

5 bulbs each of the 3 varieties shown on this page (15 in all)

\$1.15

#### Collection No. 5

10 bulbs of each (30 in all)

\$2.25

#### Collection No. 6

25 bulbs of each (75 in all)

\$5

Three colors that will greatly please you

#### 1. Bronze Queen

BREEDER

Biscuit-brown, bronze, gold, and dull old-rose. Remarkably handsome.

70 cts. for 10

\$6 per 100

#### 2. Bleu Aimable

DARWIN

Clear velvety blue, with gray and violet shading.

85 cts. for 10

\$7.75 per 100

#### 3. Psyche

DARWIN

Delicate, melting pink of the softest shade. Charming form.

75 cts. for 10

\$6.50 per 100





## New Tulips

### Darwins

**Aviateur Hawkes.** Dark rose-pink blooms of magnificent size, borne on very strong stems. Large, robust foliage to a height of 32 inches. One of the most splendid of the new sorts, and now so plentiful that bulbs can be supplied for 40 cts. each.

**Bene Est.** This is one of the new and very rare creamy yellow Darwins. The flowers are extremely large, and the soft canary-yellow bloom is made much more attractive by its glittering black stamens. About 32 in. high. Strong bulbs, 50 cts. each.

**Kathleen Parlow.** Exquisitely tinted silvery flowers with a rose-pink flush. Very large, flaring blooms on stems 30 inches high. \$1.60 each.

**Mrs. Grace Coolidge.** A dark, glowing, old-rose flower of superb size and shape which holds its form for a long time. 28 in. high. \$1.50 each.

**Orange Perfection.** A much smaller flower than the others which is counterbalanced by its intense brilliant color somewhat like the very bright Clara Butt, but almost scarlet inside. The base of the flower is dull blue and the anthers black, the whole bloom becoming much brighter as it ages until it has intense orange suffusion. About 30 in. high. 35 cts. each.

**Princess Mary.** Very large, dark rose-colored flowers edged lighter, and intensely vivid pink inside the cup, with a large white base ringed with violet-blue. About 30 in. high. 75 cts. each.



Tulipa Multiflora

**Proserpina.** Large, egg-shaped flowers of bright rosy carmine, with sweetly reflexed petals showing brighter tints, center white, shaded with slate-blue; fragrant. 14 in. high. \$1.50.

**Venus.** A very large, wide-spreading flower of rich rose-pink with a waxy bloom outside of the petals; base white, edged with dull pale blue. Showy black anthers. A very handsome sort. About 30 in. high. 30 cts. each.

**Yellow Giant.** Extra-fine variety, with a light golden yellow tint, brighter than that of Bene Est. One of the finest of the new yellow Darwins. 28 in. high. \$2 each.

### Breeders

**Cherbourg.** Large, round flowers of bright old-gold, with a pale violet flush on the outside and gray-brown streaks from the base inside. Filaments olive; anthers black. Extremely handsome. 32 in. high. \$2.50 each.

**Mrs. Beecher Stowe.** Very large, egg-shaped flowers of clear light violet with a large white base. 30 in. high. 35 cts. each.

### New Hybrid May-Flowering

**Albino.** A splendid new white variety with sturdy stems and large, flaring flowers. The petals have excellent lasting substance. 26 in. high. 35 cts. each.

**General French.** Dark old-rose flowers with an enormous white base edged with pale blue. Very long, deep blooms. Sturdy stems. 20 in. high. 20 cts. each.

**Leda.** A lily-flowered variety. Brilliant light reddish pink, edged lighter; large white base with a blue halo. 24 in. high. 45 cts. each.

**Lemon Perfection.** A very large, exquisitely shaped flower of light lemon-yellow. 15 cts. each.

**Marchioness of Londonderry.** Amber-yellow, shaded slightly darker and tinted with violet. 23 in. high. 65 cts. each.

**Mongolia.** A very large Tulip which has attracted a large amount of attention. 28 in. high. \$3.50 each.

**Orient.** A giant carmine-rose flower, tinged with reddish orange at the edges. 27 in. high. 25 cts. each.

**Pearl.** Pale pink, tinted with light carmine at the edges of the petals. Very handsome, long, deep flower. 10 cts. each.

**Rosabella.** A beautiful variety of soft shell-pink, tinted with cream, becoming softer and more delicate with age, sometimes stained and tinted with deep rose on the outside petals, and scarlet-rose on the inner petals. Black anthers. 24 in. high. 25 cts. each.

**White Duchess.** A lily-flowered variety. Snow-white, with crinkled petals and white stamens, borne on long, elegant stems. \$2 each.

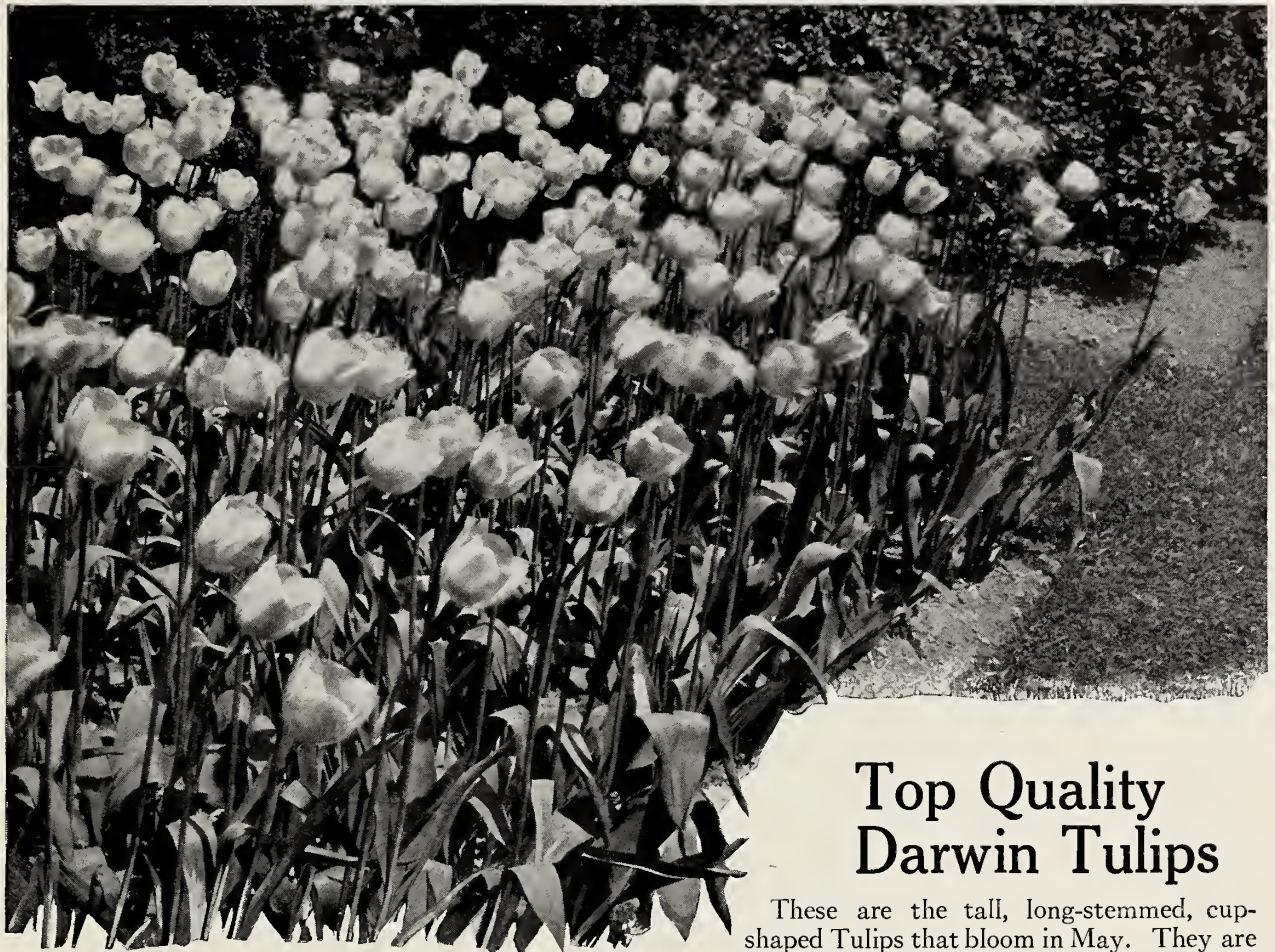
### Tulipa Multiflora

NEW, UNIQUE, BEAUTIFUL

A striking novel and lovely introduction of our own, first brought to America in 1926. Of the two varieties, the red is still exclusively sold by Schenley Gardens and is very scarce. *Tulipa multiflora* produces four to eight beautiful flowers from a single bulb. Blooms in May with the Breeder and Darwin Tulips and vies with them in grace and stateliness, growing to a height of 2 feet. A charming addition to your Tulip garden.

Pure White. 10 bulbs \$1.50.  
Deep Rosy Red. 10 bulbs \$2.





## Top Quality Darwin Tulips

These are the tall, long-stemmed, cup-shaped Tulips that bloom in May. They are very rich in shades of rose, pink, scarlet, and

tints of crimson, with a very liberal sprinkling of violet, lavender, lilac, and rich purple hues. White is almost missing in this group in varieties of moderate price. For tan and bronze shades the Breeders must be used, and for clear yellows, several of the Cottage type may be drawn upon.

Invaluable for cutting and for formal plantings, the Darwin Tulips are easily the most important and by far the largest and most popular class. In this list we have included a very wide selection of types and colors, choosing the best of the older, moderately priced varieties, and the most beautiful and least expensive of the new.

**Afterglow.** Deep orange with scarlet flush, shading to clear salmon-yellow at edges of petals; inside glowing warm orange. Flower of remarkable substance on sturdy stem. Eagerly bought for its exquisite beauty. You may include it in your plantings at a very attractive price. See color plate on page 4. Height 26 in. \$1 for 10, \$9 per 100.

**Anton Mauve.** Violet-blue, shaded lilac toward the margins. Gigantic, beautiful bloom of deep, magnificent form. Height 26 in. \$1.10 for 10, \$10 per 100.

**Anton Roozen.** Vivid rose-pink, shaded lighter at the edges—a very lively cheery color that should be used unsparingly. Beautiful, large, cup-shaped flower. Height 28 in. 75 cts. for 10, \$6.50 per 100.

**Andrea Doria.** Velvety maroon, shaded deep red—a rich color, enhanced by the satiny texture of the petals. A large, glowing, beautiful flower on tall stem. One of the finest for the borders. See color plate on page 21. Height 28 in. \$1 for 10, \$9 per 100.

**Aphrodite.** Very fine clear pink—a very refined color. Large flower on extra-tall stem which makes it especially fine for cutting. Height 34 in. \$1.30 for 10, \$12 per 100.

**Baronne de la Tonnaye.** Identical with Anton Roozen, except that it is slightly lighter and margined blush-rose. A sturdy, tall-growing variety with a color you will never tire of. Height 26 in. 70 cts. for 10, \$6 per 100.



## Darwin Tulips, continued

**Bartigon.** A very showy Tulip of fiery crimson shade with pure white base. It is a fine garden variety and unusually fit for forcing. Height 22 in. 75 cts. for 10, \$6.50 per 100.

**Bleu Aimable.** Extra-fine lilac. Height 25 in. 85 cts. for 10, \$7.75 per 100.

**Bleu Celeste.** Light blue; very fine. Scarce. Height 24 in. \$2.60 for 10, \$25 per 100.

**Centenaire.** Violet-rose with blue base. This variety has an enormous flower, richly colored and perfectly shaped. One of the most magnificent Darwin Tulips for both garden and forcing. This splendid sort until recently sold at a high price. Height 30 in. 75 cts. for 10, \$6.50 per 100.

**City of Haarlem.** Undoubtedly the finest deep scarlet Tulip in existence. Height 28 in. \$1.35 for 10, \$12.50 per 100.

**Clara Butt.** Clear salmon-pink, flushed rose—a brilliant, clean, refreshing color for the garden. Also one of the easiest Darwin Tulips to force. Height 21 in. 70 cts. for 10, \$6 per 100.

**Dream.** Lavender-blue or heliotrope, flushed a deeper heliotrope in the center of the petals. This is a beautiful, popular Darwin Tulip and should be placed in the blue border with other blue, violet, and purple Darwins. It is also magnificent when massed in front of lilac bushes. Height 27 in. 80 cts. for 10, \$7 per 100.

**Duchess of Hohenberg.** Lilac-mauve with deep blue flush through center of petals. A very beautiful flower on exceptionally tall stem. Height 30 in. \$3.10 for 10, \$30 per 100.

**Eclipse.** Beautiful deep red. Immense cup-shaped flower of glistening brilliance. Height 26 in. See color plate on page 20. \$2.40 for 10, \$23 per 100.

**Edmee (Beauty).** A beautiful shade of vivid cherry-rose with lighter border. Height 25 in. 85 cts. for 10, \$7.50 per 100.

**Ethel Roosevelt.** Lovely, sweet-scented, rose-colored flower with blue base. Large blooms on strong stems. Height 25 in. 95 cts. for 10, \$8.50 per 100.

**Europe.** Glowing scarlet, shaded salmon-rose. A beautiful red Darwin Tulip of medium size. Height 22 in. 70 cts. for 10, \$6 per 100.

**Euterpe.** Silvery lavender-mauve, with faint rosy glow and lighter edge. A graceful, elongated flower of marvelous shade. Particularly handsome when planted in combination with Flamingo and Bronze Queen. Height 28 in. 80 cts. for 10, \$7 per 100.

**Farncombe Sanders.** Rosy scarlet, edged brilliant scarlet. One of the most charming, large-flowered, red Darwin Tulips. It is also easy to force. Height 25 in. 75 cts. for 10, \$6.50 per 100.

**Faust.** Purple-maroon. The best of its color. Very highly recommended. Height 30 in. 90 cts. for 10, \$8 per 100.

**Flamingo.** A self-colored shell-pink of lovely soft shade. The pointed flower is of good size and fine form. This variety will be enhanced in beauty if planted in combination with Euterpe and Bronze Queen. Height 28 in. 85 cts. for 10, \$7.50 per 100.

**Frans Hals.** Violet-blue. Height 27 in. \$1 for 10, \$9 per 100.

**Giant.** Enormous flower of fine reddish violet color. Height 30 in. \$1.30 for 10, \$12 per 100.

**Glow.** Vermilion-scarlet of brilliant and intense shade. A handsome, large flower resembling an Oriental poppy in shape and color. Fine for planting with deep violet, blue, and orange Tulips to create strong contrasts. Height 23 in. 75 cts. for 10, \$6.50 per 100.

**Gretchen (Margaret).** Exterior delicate flesh-color; interior soft pink. A very dainty cup-shaped flower of a lovely color. Height 22 in. 70 cts. for 10, \$6 per 100.

**Gryphus.** Very dark violet-purple with beautiful gloss. Height 26 in. \$1 for 10, \$9 per 100.

**Harry Veitch.** Blood-red. A popular sort. Height 23 in. 75 cts. for 10, \$6.50 per 100.

**Isis.** Vermilion. The popular red for bedding. Height 26 in. 90 cts. for 10, \$8 per 100.



### SPECIAL OFFERS

#### Collection No. 10

5 bulbs each of the 4 varieties shown on this page  
(20 bulbs in all)

\$1.60

#### Collection No. 11

10 of each (40 in all)

\$3

#### Collection No. 12

25 of each (100 in all)

\$6.95

A combination of very charming colors. Suitable and desirable for all gardens.



### VARIETIES ON THIS PAGE

#### 1. Golden Bronze BREEDER

Rich, glowing gold, mixed with red-brown and bronze shades.

80 cts. for 10  
\$7 per 100

#### 2. Clara Butt DARWIN

Clear salmon-pink, flushed rose. Can be obtained in quantity.

70 cts. for 10  
\$6 per 100

#### 3. Princess Elizabeth DARWIN

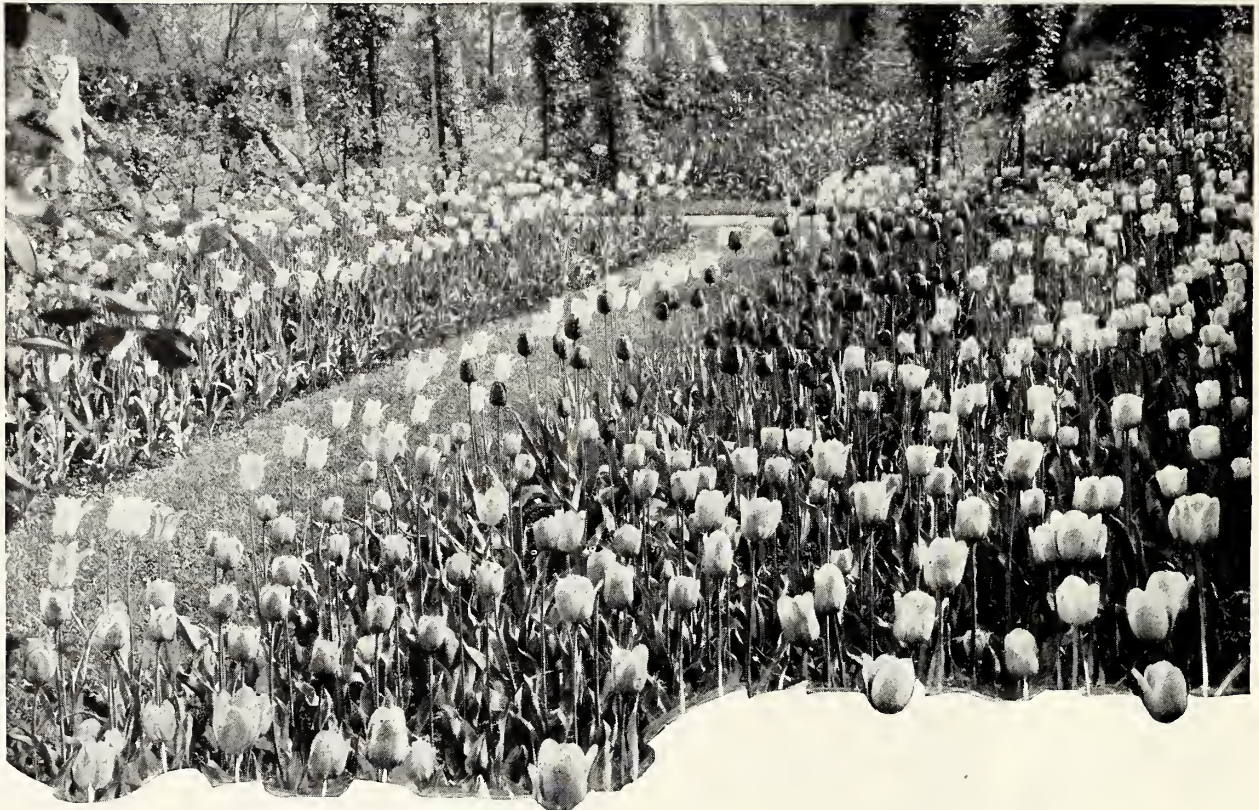
Large, long flower of glowing rose-pink. A very clear color.

70 cts. for 10  
\$6 per 100

#### 4. Wally Moes DARWIN

A soft pinkish lavender, with delicate lilac and violet tints.

\$1 for 10  
\$9 per 100



Darwin Tulips, continued

**Jubilee.** Deepest blue with purple shading. A very large flower of open form and splendid color. This is one of the best of all Darwin Tulips and will prove highly satisfactory to all who plant it. Height 29 in. \$1.30 for 10, \$12 per 100.

**King George V.** Salmon-scarlet shaded rose; inside orange-scarlet. Of refined beauty, color, and shape which anyone will admire and love. Extra-large flower of fine texture. Height 30 in. \$1.60 for 10, \$15 per 100.

**King Harold.** Deep oxblood-red. A very large, substantial flower of fine form, splendid for the border, and most effective in partial shade. Height 24 in. 75 cts. for 10, \$6.50 per 100.

**La Fiancee.** The finest deep pink variety. A very beautiful flower of extra-large size and on a very tall stem. Height 30 in. \$1.10 for 10, \$10 per 100.

**La Tulipe Noire.** The well-known "Black Tulip." The color is, in reality, very deep maroon. Height 25 in. 85 cts. for 10, \$7.50 per 100.

**Louise de la Valliere.** Rosy carmine; an exquisite bell-shaped flower. Height 24 in. \$1.30 for 10, \$12 per 100.

**Marconi.** Deep purple when the flower first opens, changing to ashy purple as it ages; white at base. Immense flower. Height 28 in. 85 cts. for 10, \$7.50 per 100.

**Massachusetts.** Vivid pink. 75 cts. for 10, \$6.50 per 100.

**Mauve Clair.** Lilac-mauve. Height 26 in. 90 cts. for 10, \$8 per 100.

**Melicette.** This is the purest lavender Darwin Tulip in existence. Inside it is light violet shading to pale lavender at the edges. Cup-shaped, with the three outer petals reflexed. Height 25 in. \$1 for 10, \$9 per 100.

**Mme. Barrois.** Lilac-rose, edged lighter rose; very attractive. Height 25 in. \$1.35 for 10, \$12.75 per 100.

**Mme. Krelage.** This Tulip, named in honor of the wife of Holland's most famous Tulip hybridizer, is lilac-rose, margined silvery pink. A brilliant flower of handsome shape and color, and superb for bedding and forcing. Height 28 in. 70 cts. for 10, \$6 per 100.

**Nauticus.** Lilac-rose; large and fine. Height 30 in. 75 cts. for 10, \$6.50 per 100.

**Ouida.** Bright crimson-scarlet. A variety of unusual size and beautiful color. It is unsurpassed for bedding, and the flowers are carried on tall, strong, erect stems. The flowers last very long and the bright crimson color never fades. Height 29 in. 75 cts. for 10, \$6.50 per 100.



## Darwin Tulips, continued

**Painted Lady.** Milk-white. Height 27 in. 75 cts. for 10, \$6.50 per 100.

**Philippe de Comines.** Dark, satiny maroon-purple. Undoubtedly one of the best varieties of this color. The flower is carried on a stately stem and has a beautiful glistening sheen. Splendid for the border and one of the easiest to force. Height 27 in. 80 cts. for 10, \$7 per 100.

**Pride of Haarlem.** Brilliant carmine-rose. Large flower of excellent form and color; sweet-scented. Superb for borders and very easy to force. Height 25 in. 70 cts. for 10, \$6 per 100.

**Princess Elizabeth.** Deep pink, changing to rose-pink. Beautiful large flower, resembling a perfect rose. Splendid for the border. Height 26 in. 70 cts. for 10, \$6 per 100.

**Princess Juliana.** Soft salmon-scarlet with orange glow; inside vivid orange-scarlet with blue base. Large, open flower of unusual brilliance. Height 24 in. 85 cts. for 10, \$7.50 per 100.

**Prince of Netherlands.** Vivid shade of cherry-red, edged soft rose. Very substantial flower of great size and beautiful shape, carried erect on a very tall stem. One of the finest of the Darwin Tulips for bedding and forcing. Height 31 in. 75 cts. for 10, \$6.50 per 100.

**Professor Rauwenhof.** Brilliant cerise-red; inside cerise-red shaded scarlet; bright blue base. A flower of striking color and great size carried on tall stem. Height 28 in. 75 cts. for 10, \$6.50 per 100.

**Psyche.** Soft pale rose; inside silvery pink with light blue base. This is a very lovely type of the softer pink Darwin Tulips. Large, handsome flower. Height 26 in. 75 cts. for 10, \$6.50 per 100.

**Purple Perfection.** Deepest purple; a fine flower. Height 23 in. 85 cts. for 10, \$7.50 per 100.

**Queen Mary.** Deep rose, with slightly lighter margins. Most substantial fine large flower of outstanding beauty. Stems tall, erect, and sturdy. This is our first selection of any Darwin Tulip of this color in this price class. Height 27 in. 90 cts. for 10, \$8 per 100.

**Remembrance.** Lilac. Height 25 in. \$1 for 10, \$9 per 100.

**Rev. H. Ewbank.** Soft lavender, shading to silvery lavender at the edges. A fine flower of open form and very beautiful color. Height 22 in. 70 cts. for 10, \$6.50 per 100.

**Roi d'Islande.** Old-rose; a beautiful globe-shaped flower, not very tall. Height 22 in. \$1 for 10, \$9 per 100.

**Ronald Gunn.** Violet-blue. The purest blue Darwin Tulip. Very fine when planted next to a white or soft pink variety. Height 26 in. \$1 for 10, \$9 per 100.

**Sir Trevor Lawrence.** Enormous lilac-blue flower of great beauty. Height 33 in. \$1.10 for 10, \$10 per 100.

**Sophrosyne.** Clear flesh-pink. Very exquisite. Height 29 in. 85 cts. for 10, \$7.50 per 100.

**The Bishop.** Deep lilac-blue of matchless purity. Immense flower of exquisite shape and stately bearing. Planted next to a deep red such as Eclipse, the effect is overwhelming. Height 24 in. See color plate on page 20. \$5 for 10, \$49 per 100.

**Valentin.** Heliotrope-violet. A very tall exhibition variety. Height 27 in. \$1 for 10, \$9 per 100.

**Viking.** Intense blue-violet. A very fine large flower. Height 27 in. \$1 for 10, \$9 per 100.

**Wally Moes.** Lavender, delicately penciled rosy lilac. Beautiful large flower of exquisite color. Height 24 in. \$1 for 10, \$9 per 100.

**White Queen.** White, faintly shaded lilac. Height 24 in. 75 cts. for 10, \$6.50 per 100.

**William Pitt.** Brilliant scarlet; splendid for bedding. Height 24 in. 75 cts. for 10, \$6.50 per 100.

**Yolande.** Soft salmon-rose with light yellow base; a very warm color of lovely shading. Height 27 in. \$1.20 for 10, \$11 per 100.

**Zulu.** Black-purple. Height 27 in. 85 cts. for 10, \$7.50 per 100.

**Zwanenburg.** The most perfect pure white Darwin Tulip known. The flowers are extra large and remain in perfect condition for fully two weeks. Our experience with it in our trial gardens has proved it to be absolutely superior to any other white Tulip. Height 28 in. \$2.50 for 10, \$24 per 100.

**DARWIN TULIPS IN BEAUTIFUL MIXTURE.** Made by ourselves from named varieties to create a brilliant effect. We specially draw your attention to this mixture of Darwin Tulips. We guarantee it to contain more varieties than any other mixture, because it is composed of all the leading kinds. 60 cts. for 10, \$5 per 100.

**A FINE COLLECTION OF 30 VARIETIES,** packed and labeled separately, 10 bulbs of each, total 300 bulbs, for \$20.

We gladly give you the benefit of our long experience if you find it difficult to make a selection. Advise us of the amount you wish to spend, the quantity of bulbs required, or the size of bed or border in which you wish to plant and we will make up a collection for you of which the shades will harmonize, and which will give you complete satisfaction together with great value.

*The varieties surrounded by a line box are those that we especially recommend for general satisfaction. But this is necessarily an arbitrary selection and there are many others in this list equally fine and dependable.*



## “Top Quality” Bulbs of Breeder Tulips in Separate Varieties

There is less uniformity in the style of the flowers in this group than in the Darwins, for they seem to embrace almost every shape and hue. However, the colors are almost always overcast with lilac, like the bloom of a grape, giving them an enchanting, misty effect like a photograph with a soft focus. The Darwins are more brilliant, but the Breeders give that soft, very restful, highly artistic atmosphere which is so much appreciated by busy people who desire relaxation and not excitement in their gardens. Some of the tallest and largest of all Tulips belong in this group, so that particular attention should be paid to the heights recorded here, in order not to blanket a lower kind by planting the tall ones in front of it. This list includes the best and most popular varieties in both the older sorts and the least expensive of the new ones.

The following list of varieties comprises all the finest colored sorts

**Abd-el-Kadir.** Copper-bronze, with lighter yellow edge; inside deep bronze with green base. Height 26 in. \$1 for 10, \$9 per 100.

**Apricot.** Buff-bronze, shaded warm apricot. Height 25 in. 90 cts. for 10, \$8 per 100.

**Bacchus.** Violet-blue, with dull bloom. A very beautiful large flower on very tall stem. Considered one of the finest Breeder Tulips. See colored plate, page 13. Height 31 in. \$1.10 for 10, \$10 per 100.

**Bronze Queen (Clio).** Buff, tinged gold; inside golden bronze, yellow base—a beautiful subdued color tone of pastel quality. Large, well-shaped flower on sturdy stem. This variety shows up to advantage if planted with the Darwins, Euterpe and Flamingo. It is also fine for forcing. Height 28 in. 70 cts. for 10, \$6 per 100.

**Bronze King.** Light copper-bronze, flushed lilac with rosy edge; a very exquisite color. A large flower of sturdy habit. Height 26 in. 70 cts. for 10, \$6 per 100.

**Cardinal Manning (Goliath).** Dull violet-red, heavily flushed bronze and rose. A very beautiful, sturdy flower of extra-large size and wonderful color. One of the most permanent Tulips. Height 30 in. 80 cts. for 10, \$7 per 100.

**Chestnut.** Real chestnut-brown of unusual beauty. The true variety is far superior to La Nigresse, often sent instead. It is particularly beautiful when planted with yellow Tulips such as Mrs. Moon, Flava, Honeymoon. Height 24 in. 80 cts. for 10, \$7 per 100.

**Copernicus.** Glowing coppery bronze, flushed old rose, inside warm brown with yellow base. Height 27 in. 90 cts. for 10, \$8 per 100.



**Breeder Tulips, continued**

**Coridion.** Luminous light yellow, faintly shaded lilac. Large, egg-shaped flower of great refinement. Specially recommended for planting in shady places with blue and lavender Tulips, such as Dream, Salomon, Euterpe, and Melicette. Height 26 in. \$2.25 for 10, \$22 per 100.

**Dom Pedro.** Coffee-brown, shaded maroon, with canary-yellow border. This lovely Tulip is undoubtedly one of the most attractive among the bronze and brown Tulips. It is particularly effective when planted in combination with lighter colors, such as Jaune d'Œuf, Goldfinch, Bronze King, Copernicus, and Garibaldi. Height 24 in. \$1.10 for 10, \$10 per 100.

**Feu Ardent.** Brilliant red, shaded mahogany. An enormous, beautiful flower of most striking appearance. Height 25 in. \$1 for 10, \$9 per 100.

**Garibaldi.** Terra-cotta, flushed lilac, with broad-edge of soft yellow. Long exquisitely shaped flower with reflexing petals. Height 31 in. \$6 for 10, \$58 per 100.

**Godet Parfait.** Deep blue-violet, with dull bloom on the outside resembling the color of purple grapes or plums. The flower is large and remarkable, on strong, tall stem. It keeps in good condition for weeks. Height 30 in. \$1.10 for 10, \$10 per 100.

**Golden Bronze (Toison d'Or).** Bronzy yellow of lively tone; inside mahogany brown shaded gold. A fine color quality much desired in gardens. Height 24 in. 80 cts. for 10, \$7 per 100.

**Goldfinch.** Brilliant light bronze of a very warm tone, suffused with soft lilac through the center of the petals; inside deep bronze with lighter reflex. One of the finest Breeder Tulips. Height 30 in. \$1.30 for 10, \$12 per 100.

**Heloise.** Van-Dyke-brown and old-rose; inside deep golden bronze with yellow base. Large, exquisite flower with reflexing petals. Height 28 in. \$1.50 for 10, \$14 per 100.

**Indian Chief.** Deep Indian-red. The largest and probably the most beautiful of all Breeder Tulips. Flower remains in perfect condition longer than that of any other variety, is carried on a strong stem 34 inches tall, and often measures 8 inches across when fully open. \$9 for 10, \$85 per 100.



**SPECIAL OFFER OF BREEDER TULIPS**

Collection No. 7. 5 bulbs each of the above (15 in all).....	\$1 75
Collection No. 8. 10 bulbs each of the above (30 in all).....	3 40
Collection No. 9. 25 bulbs each of the above (75 in all).....	7 95



## “Top Quality” Bulbs of Breeder Tulips, continued

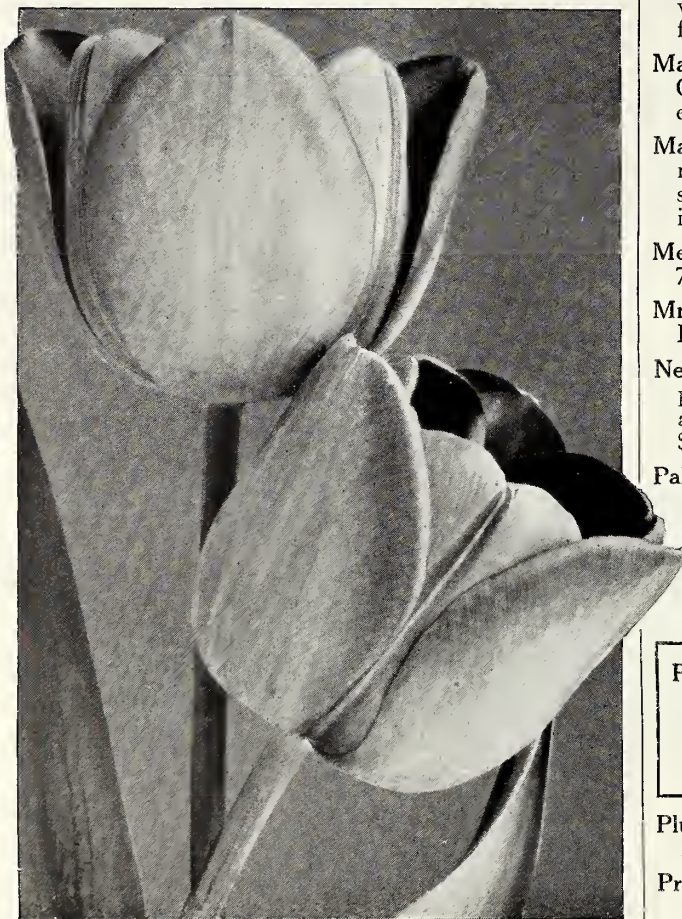
**James Watt.** Deep purple, bordered bronze. A magnificent large flower. Height 30 in. \$1.60 for 10, \$15 per 100.

**Jaune d'Œuf.** Lively soft yellow, flushed lavender; inside bronze with green base. A very long flower of great size and fine color. Retains its color longer than other yellow Breeder Tulips. Height 26 in. 90 cts. for 10, \$8 per 100.

**Jupiter.** Deep blue, overlaid with rose toward the edges. A perfect, large flower on very tall, erect stem. Height 30 in. \$3.10 for 10, \$30 per 100.

**La Turquoise.** Light, glowing scarlet, with broad edge of deep yellow. Extra-large, exquisite flower on tall, strong stem. One of the very first Breeder Tulips to come into bloom. It keeps for weeks. Height 28 in. \$1.10 for 10, \$10 per 100.

**Le Mogul.** Clear, fresh lilac, flushed white at the edges. A perfect egg-shaped flower of medium size but very pretty color. When planted with pale yellow and pale pink Tulips, such as Honeymoon, Ivory, Moonlight, Flamingo, and Mabel, it forms a very lovely color combination. Height 26 in. 90 cts. for 10, \$8 per 100.



Breeder Tulip, Jaune d'Œuf

**Louis XIV.** Dark purple, shading to clear bronze at the edges of the petals, which change to lively golden bronze as the flower unfolds. A perfectly developed specimen flower of this variety resembles a Roman or Greek urn cast from bronze, with steel-blue base. It is magnificent and inspiring and has to be seen to be appreciated. Undoubtedly one of the most wonderful Tulips in existence. Not long ago this variety sold at an extravagant price, but it is now so inexpensive that we may all enjoy it. Height 28 in. \$1 for 10, \$9 per 100.

**Lucifer.** Bright orange-scarlet. The beautiful, large, substantial flowers are of globular shape. It is considered the finest brilliant orange Breeder Tulip and will give the greatest satisfaction. Fine for massing with the variety Bacchus. Height 26 in. \$1.50 for 10, \$14 per 100.

**Mabel.** Cerise-pink; very beautiful flower. 90 cts. for 10, \$8 per 100.

**Marechal Victor.** Lavender, heliotrope, and golden yellow in beautiful suffusion of color. A lovely soft-colored variety of recent introduction. Height 28 in. \$5.10 for 10, \$50 per 100.

**Marginata.** Orange, shaded apricot, margined yellow. One of the finest, softest colored Breeder Tulips in existence. Height 25 in. \$1.30 for 10, \$12 per 100.

**Marie Louise.** Soft rose, shaded yellow toward the margin—a very pleasing color combination. Large, substantial, globular flower on strong stem. Height 22 in. 75 cts. for 10, \$6.50 per 100.

**Medea.** Salmon-carmine; very large flower. Height 26 in. 70 cts. for 10, \$6.50 per 100.

**Mme. Lethiery.** Salmon-rose, with lighter edges; very fine. Height 26 in. 85 cts. for 10, \$7.50 per 100.

**Newton.** The tallest of all late-flowering varieties. Dark purple with plum bloom on outer petals; very fine amongst arabis or forget-me-nots. Height 36 in. \$6.10 for 10, \$60 per 100.

**Paladin.** Deep old-rose; inside apricot, shading to purple at the base. A large and very beautiful flower. Height 27 in. \$1.60 for 10, \$15 per 100.

**Panorama.** Very large, globular-shaped flower of a deep orange-red. One of the best varieties. Height 26 in. 75 cts. for 10, \$6.50 per 100.

**Pink Pearl.** A wonderfully effective novelty. Beautiful flower of fine form; pearl-pink with rosy bloom passing to silvery-pink at the edges of the petals; interior rose, shaded creamy white. Height 28 in. \$2.70 for 10, \$26 per 100.

**Plutarchus.** Bronze shaded lilac; inside terra-cotta. Height 26 in. 80 cts. for 10, \$7 per 100.

**Prince Albert.** Deep golden brown, with purple flush. Undoubtedly one of the finest. Height 32 in. \$1 for 10, \$9 per 100.





“Top Quality” Bulbs of Breeder Tulips, continued

**Prince of Orange.** Terra-cotta, shaded bright orange-yellow. Large, bell-shaped flower of very brilliant color. This variety will be found enlivening to shrubbery borders where it is much wanted. Height 24 in. \$1 for 10, \$9 per 100.

**Queen Alexandra.** Soft primrose-yellow, with delicate lilac flush. Height 23 in. 70 cts. for 10, \$6 per 100.

**Salomon.** Delicate pale lavender, of very clear, refreshing tone. Long, attractive flower on graceful stem. The most beautiful lavender Breeder Tulip to plant with pale yellow and golden yellow sorts, and also with deep-toned ones, such as Superba, Velvet King, or Louis XIV. Height 28 in. \$1 for 10, \$9 per 100.

**Superba.** Chestnut-brown with the luster of a chestnut. A very beautiful Breeder of a high quality rarely known. It should be in every Tulip Collection. Height 27 in. 80 cts. for 10, \$7 per 100.

**St. James.** Dark lilac, edged bronze, shaded rose; inside mahogany, shading to golden bronze. Very beautiful large flower on a stem 30 inches tall. 75 cts. for 10, \$6.50 per 100.

**Turenne.** Dark blue, flushed bronze at edges of petals. Height 30 in. 90 cts. for 10, \$8 per 100.

**Violet Queen.** Ruby-violet. Height 28 in. 80 cts. for 10, \$7 per 100.

**Velvet King.** Deepest glossy purple of satiny quality. A flower of extraordinary size and substance, greatly admired by all who plant it. Height 25 in. \$1 for 10, \$9 per 100.

**Vulcan.** Apricot-red, shading at the edges to a lively yellow. One of the varieties highly prized by amateurs. Height 25 in. \$1.10 for 10, \$9.50 per 100.

**Wilberforce.** Canary-yellow, flushed rose; very fine. Height 32 in. 90 cts. for 10, \$8 per 100.

**Willem de Zwyger.** (Novelty.) Darkest purple. The best of the very deep purple varieties. Height 28 in. \$4 for 10, \$36 per 100.

**Yellow Perfection.** Light bronzy yellow; gets lighter as the flower ages. Planted with Clara Butt is an exceptionally fine color combination. Height 24 in. 80 cts. for 10, \$7 per 100.

**BREEDER TULIPS IN A MIXTURE OF BEAUTIFUL COLORS.** 70 cts. for 10, \$6 per 100.

**A SUPERB COLLECTION OF 20 VARIETIES** packed and labeled separately, 10 bulbs of each (total 200 bulbs), \$20; 5 bulbs of each (total 100 bulbs), \$10.

We gladly give you the benefit of our long experience if you find it difficult to make a selection. Advise us of the amount you wish to spend, the quantity of bulbs required, or the size of bed or border and we will make up a collection of shades which will give you complete satisfaction.



## “Top Quality” Bulbs of Cottage Tulips in Separate Varieties

Tulip-breeding has been more active in this group than in any other recently, and here we find many of the most airy and graceful varieties, which are better suited to informal gardening than either the Darwins or the Breeders. Most of them have a flaring, lily-like form, and they vary amazingly in height from some about 15 inches high to those over 3 feet. In this group some of the clearest of the blended shades are found, and all the pale and rich pure yellows in the late-flowering class. Some of the modern kinds are very expensive, but there are exquisitely beautiful sorts of moderate price in this list, and a few of the more recent varieties which have become sufficiently plentiful that they are not prohibitive in price.

The following list of separate varieties comprises all the finest colored sorts

**Adonis.** Rosy carmine, lily-flowered variety. Height 24 in. 90 cts. for 10, \$8 per 100.

**Ægir.** Very large, dark rose flower of great refinement. Height 22 in. 90 cts. for 10, \$8 per 100.

**Alaska.** A new, hybrid, lily-flowered variety. The exceptionally large, long flower is of purest soft yellow and exquisite shape. Connoisseurs consider this one of the most beautiful yellow Tulips known. Height 28 in. Also see color plate on page 4. \$3.50 for 10, \$34 per 100.

**Alcmene.** (Exquisite novelty.) Cerise-red. Height 24 in. 95 cts. for 10, \$8.50 per 100.

**Amber Crown.** Yellow, with broad flush of lilac-bronze; conspicuous, large, vivid green base. A very interesting, beautiful flower. A fine variety for planting in clumps between shrubbery. Height 18 in. 90 cts. for 10, \$8 per 100.

**Ambrosia.** Lilac-rose, flushed yellow, inside salmon-orange. Very large flower on tall stem. Height 28 in. \$2 for 10, \$19 per 100.



## 1. John Ruskin

COTTAGE

Very long-petaled and large flowers of soft lavender-rose, edged fawn.

75 cts. for 10, \$6.50 per 100

## 2. Pluto

COTTAGE

Vivid cherry-pink blooms of an exceedingly clear and refreshing shade.

70 cts. for 10, \$6 per 100

## 3. Inglescombe Yellow

COTTAGE

Fine clear yellow flowers on tall stems. Very late-blooming.

65 cts. for 10, \$5.50 per 100

## SPECIAL OFFERS

### Collection No. 16

5 bulbs of each of the varieties shown in this plate.

\$1

### Collection No. 17

10 bulbs of each of the varieties shown in this plate.

\$2

### Collection No. 18

25 bulbs of each of the varieties shown in this plate.

\$4.25



**Arethusa.** (Novelty.) Soft yellow; very fine. Height 30 in. \$3.60 for 10, \$35 per 100.

**Artemis.** Carmine-rose with white base; tall, strong stem. A lily-flowered variety of great merit. Height 24 in. 80 cts. for 10, \$7 per 100.

**Avis Kennicott.** A deep yellow variety with black base; very beautiful. Height 25 in. \$1.25 for 10, \$11.75 per 100.

**Bouton d'Or (Golden Beauty).** Deep golden yellow, with black anthers. Medium-sized, cup-shaped flower. Height 20 in. 70 cts. for 10, \$6.50 per 100.

**Caledonia.** Orange-scarlet. Height 25 in. 60 cts. for 10, \$5 per 100.

**Dido.** (Novelty.) Orange-red, bordered orange-yellow. A very beautiful, exquisitely colored flower. Height 28 in. \$2.80 for 10, \$27 per 100.



## “Top Quality” Bulbs of Cottage Tulips in Separate Varieties, continued

**Dulcinea.** (Novelty.) Soft rose; very beautiful. The true variety. Height 24 in. 90 cts. for 10, \$8 per 100.

**Elegans.** Clear deep crimson. Handsome, long flower of lily shape with reflexing petals, carried gracefully on a very tall stem. Very striking. Height 30 in. \$1 for 10, \$9 per 100.

**Ellen Willmott (Miss Willmott).** One of the most attractive flowers we know of in Tulips. The flower is long and narrow with slightly reflexed petals on a very tall and straight stem. When it opens, the color is primrose outside and canary inside; later the color grows bright yellow. A fine variety to plant in combination with lavender and rose, such as Melicette, The Bishop, Flamingo, Salomon, Duchess of Hohenberg, and Euterpe. Height 24 in. 80 cts. for 10, \$7 per 100.

**Fairy Queen.** Rosy lavender, margined and shaded soft yellow. This is not a pale-colored sort but one with plenty of color. It is very beautiful indeed. Height 20 in. 70 cts. for 10, \$6 per 100.

**Flava.** Ivory-yellow; very beautiful large flower of stately bearing. One of the best yellows to use in combination with Darwin Tulips. Height 26 in. \$2.40 for 10, \$23 per 100.

**Gesneriana Ixioides.** Golden yellow. Height 22 in. 85 cts. for 10, \$7.50 per 100.

**Gesneriana Spathulata.** Crimson-scarlet. A very old sort which readily maintains its popularity on account of its brilliant color and sturdy habit. Height 24 in. 70 cts. for 10, \$6 per 100.

**Grenadier.** A huge flower of the most brilliant orange color imaginable. It often measures 10 to 12 inches from tip to tip and it is of such a blazing, brilliant, beautiful shade that it is easily the outstanding Cottage Tulip of this color. It should be freely used among deep purple and violet-blue Darwin and Breeder varieties where it will create excellent contrasts. Height 24 in. 95 cts. for 10, \$8.50 per 100.

**Hammar Hales.** Brown, flushed apricot. Height 18 in. 70 cts. for 10, \$6.25 per 100.

**Honeymoon.** (Novelty.) Ivory-yellow on a very tall, straight stem. The finest of the pale yellow varieties. Height 28 in. \$1.35 for 10, \$12.75 per 100.

**Illuminator.** Warm-toned flower of deep yellow, flushed with scarlet. Lovely planted among sky-blue flax. Height 24 in. \$1.10 for 10, \$10 per 100.

**Idyll.** Outside glowing rose; inside salmon-pink; very large, substantial flower. We wish to call special attention to this fine variety. It is not well known and therefore not generally appreciated, but it has proved in our trial-gardens to be one of the best. Height 26 in. 85 cts. for 10, \$7.50 per 100.

**Inglescombe Yellow.** Bright canary-yellow; large, cup-shaped flower on sturdy stem. A fine bright sort to plant among shrubby or evergreens. Height 21 in. 65 cts. for 10, \$5.50 per 100.

**Inglescombe Pink.** Salmon-rose; very popular. Height 24 in. 65 cts. for 10, \$5.50 per 100.

**Inglescombe Scarlet.** Scarlet. Height 20 in. 70 cts. for 10, \$6 per 100.

**Isabella.** Creamy white, shaded carmine; very distinct and lovely. Height 22 in. 70 cts. for 10, \$6 per 100.

**John Ruskin.** Soft rosy lavender, shaded salmon and broadly edged amber-yellow. A large, long flower of elegant form and exquisite color. Height 18 in. 75 cts. for 10, \$6.50 per 100.

**Kaleidoscope.** Rose striped mauve with pale yellow edge. A very interesting and pretty Tulip. Height 16 in. 80 cts. for 10, \$7.25 per 100.

**La Merveille.** Orange-scarlet, flushed deep rose. A very large flower of open form, delightfully perfumed. Height 20 in. 70 cts. for 10, \$6 per 100.



Cottage Tulips, Dulcinea



## “Top Quality” Bulbs of Cottage Tulips in Separate Varieties, continued

**Mentor.** (Novelty.) Glossy brown. Height 18 in. 90 cts. for 10, \$8 per 100.

**Moonlight.** Soft sulphur-yellow; long, oval flower on graceful stem. One of the most attractive light yellow varieties and very useful in the border. Height 25 in. See color plate, page 21. 75 cts. for 10, \$6.50 per 100.

**Mrs. Kerrell.** A most refined, soft salmon-pink with dainty flush of pale orange. One of the loveliest of all Cottage Tulips. Height 18 in. 95 cts. for 10, \$8.50 per 100.

**Mrs. Moon.** Fine golden yellow; large, substantial flower with pointed petals, carried erect on tall stem. One of the best rich yellow Tulips. Height 25 in. See color plate, page 21. \$1 for 10, \$9 per 100.

**Nectar.** Deep carmine-rose, with pure white base; slightly reflexing petals. Very beautiful flower. Height 26 in. 95 cts. for 10, \$8.50 per 100.

**Orange King.** Rich deep orange, flushed rose, inside glossy orange-scarlet. A large, globe-shaped flower of showy character, unsurpassed for beds and borders. It is sweet-scented. Height 23 in. 70 cts. for 10, \$6 per 100.

**Picotée.** This is the delightfully graceful Tulip of pure white with narrow crimson edge. The petals are reflexing and pointed, making it altogether exquisite. Height 20 in. 70 cts. for 10, \$6 per 100.

**Pluto.** Rose-pink. Height 24 in. 70 cts. for 10, \$6 per 100.

**Primrose Beauty.** Soft primrose. A lovely variety. Height 18 in. 65 cts. for 10, \$5.50 per 100.

**Quaintness.** (Novelty.) Golden bronze. A very large, finely colored flower. Height 20 in. \$1.70 for 10, \$16 per 100.

**Retroflexa.** Bright yellow, elegantly reflexing petals; very handsome and splendid for cutting. Height 22 in. 90 cts. for 10, \$8 per 100.

**Scarlet Emperor.** Enormous flower of brightest scarlet. Height 22 in. \$1.30 for 10, \$12 per 100.

**Solferina.** Creamy yellow. Height 24 in. \$1.15 for 10, \$10.75 per 100.

**Summer Beauty.** Rose, flaked crimson and white. Height 18 in. \$1.30 for 10, \$12 per 100.

**Walter T. Ware.** Deepest and richest chrome-yellow. A fine flower of wonderful substance. Height 18 in. \$1.40 for 10, \$13 per 100.

**Yellow Picotée.** Canary-yellow with carmine edge. Height 20 in. 75 cts. for 10, \$6.50 per 100.

**COTTAGE TULIPS IN BEAUTIFUL MIXTURE.** Made from named varieties. 60 cts. for 10, \$5 per 100.

**BEAUTIFUL COLLECTION OF 25 VARIETIES,** 10 bulbs of each (total 250 bulbs), each variety packed and labeled separately, \$20.

We recommend that garden-lovers always secure the heaviest “mother bulbs” for most successful Tulip-planting. Our Holland growers have frequently told us that less than 5 per cent of the entire Holland bulb crop con-



A fine border of Cottage Tulips

sists of that extra-high grade which we demand from them. We pay them well for giving us this select stock. Our prices in these lists are based upon delivery of such supreme quality only.

To make as wide a distribution as possible of the finer varieties, we offer 1000 May-flowering Tulips, 10 each of 100 varieties, including all types, each variety packed separately and carefully labeled, for \$78 on orders received up to July 1 only.



**SPECIAL OFFERS**

*Three most superb varieties*

**Collection No. 13**

5 bulbs each of the varieties shown on this page (15 in all)

**\$5**

**Collection No. 14**

10 bulbs each of the varieties shown on this page (30 in all)

**\$9.50**

**Collection No. 15**

25 bulbs each of the varieties shown on this page (75 in all)

**\$22**

**VARIETIES ON THIS PAGE**

**1. Dido**  
COTTAGE

One of the handsomest Tulips known. Old-rose, bronze, and fawn in exquisite shadings.

\$2.80 for 10  
\$27 per 100

**2. Eclipse**

DARWIN

Burning crimson-scarlet of great intensity and brilliance.

\$2.40 for 10  
\$23 per 100

**3. The Bishop**

DARWIN

Nobly proportioned bloom of dusty violet and blue. Very imposing.

\$5 for 10  
\$49 per 100



**SPECIAL OFFERS**

of Four Very Fine Tulips for Your Garden

**Collection No. 19**

5 bulbs of each of the 4 varieties displayed on this page

**\$1.70**

**Collection No. 20**

10 bulbs of each of the 4 varieties displayed on this page

**\$3.25**

**Collection No. 21**

25 bulbs of each of the 4 varieties displayed on this page

**\$7.50**

These pretty Tulips are very well adapted to the hardy border and for planting among shrubs in semi-shady nooks. They are so brilliant and effective that they remain favorites with Tulip-lovers.

**VARIETIES ON THIS PAGE**

- 1. Andrea Doria**  
DARWIN  
Dark red-purple flowers of great beauty and richness.  
\$1 for 10, \$9 per 100
- 2. Moonlight**  
COTTAGE  
Pale, translucent yellow of a charming, glimmering shade.  
75 cts. for 10, \$6.50 per 100
- 3. Mrs. Moon**  
COTTAGE  
Excellent large blooms of bright golden yellow. Very satisfactory.  
\$1 for 10, \$9 per 100
- 4. Pride of Haarlem**  
DARWIN  
Brilliant crimson flowers of great substance on strong stems.  
70 cts. for 10, \$6 per 100



## Triumph Tulips

Since we were the first to introduce this new race of Tulips to America, we are very proud of the fine record they have made for themselves and the great satisfaction they have given. Fundamentally, Triumph Tulips are crosses between the Early-flowering Tulips and the later types, and consequently partake of the earliness of the former with the shapes, colors, and habit of the Cottage, Breeder, and Darwin ancestors on the other side of the house. They ideally bridge the gap between the Tulips of early April and those of mid-May, filling a space that has long been vacant.

We have heard only words of praise for them, and have found them worthy of all the fine things said.

- Alaraph.** Very dark red, bordered yellow; base lemon-yellow. 30 cts. each, \$2.50 for 10.
- Astoria.** Large; cream-white. 25 cts. each, \$2 for 10.
- Blue Star.** Dark purple-violet. 25 cts. each, \$2.25 for 10.
- Boston.** Rose, shaded lilac, bordered salmon-yellow. 25 cts. each, \$2 for 10.
- Canopus.** Rose-pink, bordered salmon-pink. 20 cts. each, \$1.80 for 10.
- Colorado.** Orange-yellow, feathered red. 50 cts. each, \$4 for 10.
- Dakota.** Purple-carmine, base white. 30 cts. each, \$2.50 for 10.
- Georgia.** Deep pink and white. 20 cts. each, \$1.80 for 10.
- Hydrus.** Old-rose, shading to gold at the border. 20 cts. each, \$1.50 for 10.
- Lord Carnarvon.** Magenta-rose, bordered lighter. 20 cts. each, \$1.80 for 10.
- Memphis.** Pink, bordered sulphur-yellow; base cream-white. 20 cts. each, \$1.80 for 10.

- Missouri.** Dark glossy wine-red. 15 cts. each, \$1.10 for 10.
- Mr. Zimmerman.** Deep pink, bordered cream-white; base pure white. \$1 each, \$9 for 10.
- Ohio.** Purple-carmine-red, base white. 20 cts. each, \$1.80 for 10.
- Prof. Tendeloo.** Deep amaranth-red, bordered deep citron-yellow. 25 cts. each, \$2.25 for 10.
- Regulus.** Dark purple. 30 cts. each, \$2.50 for 10.
- Sagittarius.** White, shaded cream-white. 50 cts. each, \$4 for 10.
- Silver Star.** Cream-white. 30 cts. each, \$2.50 for 10.
- Snowdrift.** Pure white. The finest white Tulip. Lily-flowering. 35 cts. each, \$3 for 10.
- Tucana.** Orange-red, base yellow. 30 cts. each, \$2.50 for 10.
- Ursa Minor.** Golden yellow. \$3 each, \$25 for 10.

### Double Triumph Tulips

- Avondzon.** Blood-red, shaded orange. As large as a peony. \$1 each, \$9 for 10.
- Mount Everest.** Lilac-rose of beautiful color and largest size. 25 cts. each, \$2 for 10.

### Botanical Tulips and Species

The general characteristics of the various species, all of which are natives of Asia Minor and Central Asia, are bright colors and recurved petals. These Tulips do not always feel happy in their new surroundings and after two, or possibly three seasons they will disappear, but with care and the provision of suitable quarters they will flower quite satisfactorily and more than repay the original investment. They are best contented in rock-gardens and sunny borders. The list we offer contains the varieties that have proved most widely satisfactory.

- Clusiana.** Charming, sprightly, glistening white flower with a carmine flame on each petal; erect stem 9 to 12 inches tall; glaucous leaves. Likes a warm, sheltered corner in deep vegetable soil. Delightful for forcing. 85 cts. for 10, \$7.50 per 100.
- Greigi Aurea.** Brilliant orange-scarlet, with deep yellow; goblet-shaped flower, pointed, slightly reflexing petals, and broad, thick leaves flushed with purple. Blooms in late April and May and is one of the most gorgeous of Tulips. Lovely with a groundwork of chionodoxa. Hot, dry situation. While a wonderful Tulip when it flowers well, the bulbs will sometimes produce no bloom. \$2 for 10, \$18 per 100.
- Kaufmanniana.** One of the most beautiful of all Tulips. Large, creamy flower, brilliantly marked with carmine, yellow center. Flower opens flat and is carried on a stem usually less than a foot in height. Blooms early in April out-of-doors and is delightful for forcing. The bulbs should be planted at least 6 inches deep. Plant large masses of these under trees or evergreens. \$2 for 10, \$18 per 100.







## BOTANICAL TULIPS AND SPECIES, continued

**Persica.** A charming dwarf for narrow borders or the rock-garden. Fragrant yellow flowers, bronze on the exterior, are borne two or three on a slender, curving stem. \$1.60 for 10, \$15 per 100.

**Præstans.** A gay scarlet beauty often bearing two or more flowers to a stem. It appears above ground so early that it is best to plant it among dwarf shrubs that will protect it from frosts. Flowers large and borne on 8-inch stems. \$4 for 10, \$39 per 100.

**Saxatilis.** Earliest Tulip to bloom. Mauve, shot with rose, carried on 8-inch stems. Frequently two-flowered. Easily forced. \$4.20 for 10, \$40 per 100.

**Sprengeri.** The latest of all Tulips to flower. Makes a handsome group in the rock-garden or border. The flowers are large and bright orange-scarlet. Grows from 8 to 10 inches tall and when established self-sows freely. \$1.60 for 10, \$15 per 100.

**Sylvestris.** Deliciously fragrant, butter-yellow blossoms, often two to a stem, with bronze exteriors, carried on slender, arching stems. A charming species that increases rapidly when once established. Interplant with grape hyacinths. \$1.25 for 10, \$12 per 100.

**Viridiflora Præcox.** Pale green, edged with creamy yellow; large, fine, open flower with pointed petals. Very nice to cut with yellow or pink Tulips. Height 20 in. \$5.20 for 10, \$50 per 100.

**Viridiflora.** Called the "Green Tulip." Pale green, edged creamy yellow. Very open flower with narrow petals. \$1.25 for 10, \$12 per 100.

**Vitellina.** A beautifully shaped flower of a creamy yellow tint. Opens with the earliest of the May Tulips. Dwarf, sturdy habit. Fragrance like that of oranges. 95 cts. for 10, \$8.50 per 100.

## Bizarre and Bybloem Tulips

These are the gorgeous old-time favorites with mottled, flamed, flushed, and feathered colorings of great beauty and diversity of design. All of them are "rectified" or "broken" forms of the Breeder Tulips which were formerly grown only to produce these delightful breaks in color.

### Bizarre Tulips

**MIXTURE OF BEST 10 VARIETIES.** 85 cts. for 10 bulbs, \$7.50 per 100.

### Bybloem Tulips

**MIXTURE OF BEAUTIFUL VARIETIES.** 80 cts. for 10 bulbs, \$7 per 100.

## Parrot Tulips

They belong to the late- or May-flowering class, and have immense, attractive flowers of singular, picturesque forms and brilliant and varied colors. The petals are curiously fringed, and the form of the flower, especially before it opens, resembles the neck of a parrot. They form extravagantly showy beds, are especially desirable for cut-flowers, and should be grown in every flower garden.

All varieties 70 cts. for 10, \$6 per 100

**Admiral of Constantinople.** Fine red.

**Cafe Brun.** Brown and yellow striped.

**Lutea Major.** Yellow; fine; free blooming.



Parrot Tulips

### PARROT TULIPS, continued

**Markgraaf Van Baden.** True orange, striped scarlet; extra fine.

**Perfecta.** Yellow and scarlet; large flower.

**Rubra Major.** The finest red of all.

**Parrot Tulips in Beautiful Mixtures.**

### New Parrot Tulip, Fantasy

An exceptionally large, soft pink flower with a splash of light green in the recesses of the beautifully crinkled petals. It is of fine substance and remains in good condition for about two weeks. The bloom is carried upright on a strong stem, 2 feet or more high.

Fantasy gained immediate recognition as one of the most wonderful Tulips ever produced. You should not fail to include a few bulbs in your order. We know you will consider this a fine purchase when you see the flowers.

We are getting our supply from a firm that owns the largest number of bulbs, and we can promise large-sized bulbs. \$1.50 each, \$14 for 10.



## HOBBE TULIP

*Syn. Sarah Bernhardt*

Brilliant flower of giant size, carried on very sturdy stem. Old rose flushed buff. One of the finest of all Tulips. Blooms a few days before the Darwin Tulips.

95 cts. for 10 bulbs,  
\$8.50 per 100



### **SIRENE.** One of the best Lily-flowered Tulips

Beautiful deep rose with paler margins. It is one of the most exquisite of Tulips from the time the bud begins to color until the last petal has dropped. The various stages of development are all marked by decided changes of color and appearance, all of them revelations of grace and beauty. First it opens like a rose with a glowing warmth in its color; then it takes on the form of a graceful lily while the color grows more delicate; and later, in the midday sun, it changes to a perfect six-pointed star of silvery rose. Height 26 in. 9 cts. each, 80 cts. for 10 bulbs, \$7 per 100.

THESE TWO REMARKABLE TULIPS ARE WORTHY OF YOUR SPECIAL ATTENTION

## Early Tulips

The Early Dutch Tulips are fashioned to serve formal ends in the garden—to march strictly along garden paths, to outline gaily the quaint patterns of beds and borders, to mound with pure color the squares and circles and half-moons set in the fresh green sod, and to stand in seemly array in our garden pots and our window-boxes. They have a charm all their own, and their quiet primness is a large part of it. There is a delicacy of texture, a purity of color, often a rare fragrance, and the endearing fact that they, like the bluebird, belong to the first days of the real spring, and are instinct with its glow and freshness and zest.

To plan beds of these crisp, shining things is the most refreshing of occupations. Think of the wonderful golden salmon Tulip, *De Wet*, rising from a sea of tremulous forget-me-nots! Or the bright pink cups of *Flamingo* held above mats of grey-leaved, double arabis! And one might plant *Goldfinch* with purple velvety pansies, *Pink Beauty* with lavender *Viola cornuta*, or make a burnished show of some fine scarlet sort among brown wallflowers.

These beds are far more lovely than the sharply defined arrangements of Tulips in crude primary colors that have for so long been in favor in parks and other public places. Far better a bed of one variety to make a splendid glow of color than these mixtures, so often harsh. It is, however, quite possible to make fine beds of two or more varieties of early Tulips if great care is taken in the selection of the colors.

Many of the early Tulips are fine for forcing and may be brought on quite early in the winter.

In order that you may select the varieties that are most satisfactory for forcing, we have marked such sorts in the following list with an asterisk (\*).



Early Tulip, *De Wet*

**\*De Wet.** Of a glorious orange color, with unusual golden salmon effect produced by scarlet veining on a deep orange ground. One of the most beautiful of early Tulips. Makes gorgeous beds interplanted with forget-me-nots. Very fragrant and is adapted for forcing; splendid under artificial light. Height 17 in. \$1.75 for 10, \$16 per 100.

## Single Early Tulips

**\*Brilliant Star.** Large; bright vermilion-scarlet. A most beautiful Tulip for forcing. Height 14 in. 85 cts. for 10, \$7.50 per 100.

**\*Cardinal Rampolla.** Gay yellow of fair size, with orange-scarlet edge. Height 11 in. \$1.15 for 10, \$10.50 per 100.

**Couleur Cardinal.** A warm red Tulip with a plum-colored bloom on the outer petals. Handsome, globular form and a strong stem that makes it particularly fine for bedding. Creates a rich effect planted among purple pansies. Its place is essentially in the open where it produces an effect both rich and satisfying. Height 13 in. 85 cts. for 10, \$7.50 per 100.

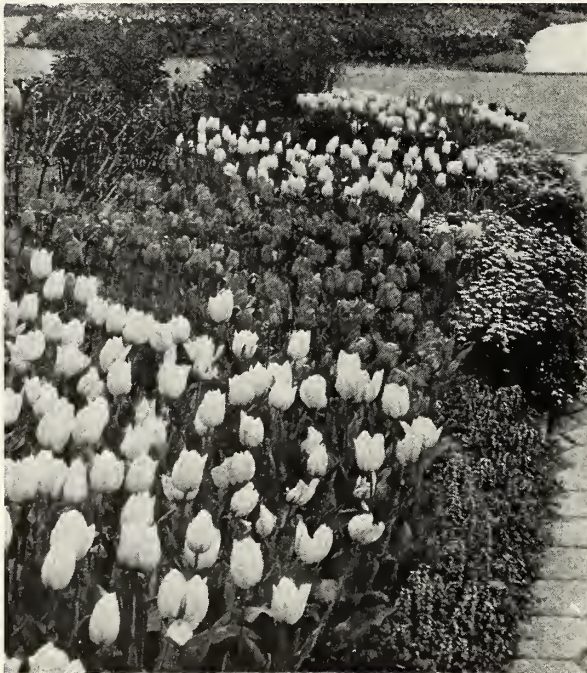
**Enchantress.** A most unusual blending of salmon-orange and rare yellow tones. Brilliant, sturdy variety for outdoor planting. Height 10 in. 90 cts. for 10, \$8 per 100.

**\*Flamingo.** This most beautiful Tulip is much the color of an American Beauty rose, with a white stripe through each delicately crinkled petal. Makes beautiful beds planted with white arabis, or is most effective with purple pansies in window-boxes or in the garden. Height 13 in. 85 cts. for 10, \$7.50 per 100.



## Single Early Tulips, continued

- \***Fred Moore.** Very handsome bright orange, shaded with scarlet. Splendid for forcing. Height 12 in. 75 cts. for 10, \$6.50 per 100.
- \***Golden Queen.** Large, pure yellow flower of unusually fine form. Makes a lovely bed with forget-me-nots and may be forced early. Height 14 in. \$1 for 10, \$9 per 100.
- \***Goldfinch.** Another fine pure yellow Tulip that lasts long in perfection. Makes fine beds or may be successfully forced. Height 14 in. 95 cts. for 10, \$8.50 per 100.
- Hobbema. See page 24.
- \***Ibis.** A beautiful rose-colored Tulip, with white markings. Resembles Flamingo, but of deeper color. A magnificent flower. Height 14 in. 95 cts. for 10, \$8.50 per 100.
- \***Keizerskroon.** Large, scarlet flower, edged with bright yellow. A good forcer. Height 16 in. \$1.10 for 10, \$10 per 100.
- \***Lady Boreel.** The finest pure white Tulip, either for beds or forcing. Flower of beautiful form, long and slender. Height 16 in. 85 cts. for 10, \$7.50 per 100.
- \***La Reine Maxima.** A lightly flushed white Tulip of large size. Makes charming beds with lavender violas. Splendid for forcing. Height 13 in. 85 cts. for 10, \$7.50 per 100.
- \***McKinley.** Large, orange-red flower, shaded carmine on exterior of petals, on strong, tall stem; fine early forcer. 80 cts. for 10, \$7.25 per 100.
- \***Max Havelaar.** A remarkable rich-toned Tulip which is especially beautiful under artificial light. Long flower of warm salmon-orange. Good for forcing and lovely massed among brown and orange wallflowers. Height 12 in. 85 cts. for 10, \$7.50 per 100.
- \***Mon Tresor.** The best yellow bedding Tulip; color deep and clear; very handsome form; splendid for forcing. Height 13 in. \$1.05 for 10, \$9.50 per 100.



**Moonbeam.** A beautiful open flower in tender tones of yellow. A fine and scarce novelty. Height 14 in. \$1.20 for 10, \$11 per 100.

\***Pink Beauty.** The large, beautifully formed, vivid pink flower is carried on a strong, erect stem. Makes beds of remarkable brilliance and beauty when interplanted with forget-me-nots. Fine for late forcing, lasting a long time in bloom. Height 12 in. \$1.70 for 10, \$16 per 100.

**President Taft.** Lovely white flower with a gay cherry-colored edge that spreads over the segments as the flower ages. Is most effective with interplantings of silver-grey-foliaged *Phlox subulata*. Height 14 in. 95 cts. for 10, \$8.50 per 100.

\***Prince of Austria.** A warmly fragrant, bright orange-scarlet Tulip with a yellow base. Makes lovely bed with forget-me-nots. It is splendid in pots, fine outdoors, and highly attractive with its orange-red coloring, wiry, strong stems, and long-lasting flowers. Height 15 in. 80 cts. for 10, \$7 per 100.

\***Proserpine.** An enormous, globular flower of carmine, shaded rose; delightfully scented. Plant among pink forget-me-nots. One of the earliest to force. Height 14 in. \$1.10 for 10, \$10 per 100.

\***Prosperity.** Lovely, delicate rosy pink flower. Exclusively offered for very early forcing. Height 12 in. 80 cts. for 10, \$7 per 100.

\***Rising Sun.** A very large, golden yellow Tulip of fine form and sturdy habit. Exceptional exhibition Tulip and splendid for the border. Height 16 in. \$1.15 for 10, \$10.50 per 100.

\***Rose Luisante.** Splendid, large, rose-pink of great substance. Lovely for edging borders of evergreens. May be used for late forcing. Height 12 in. \$1 for 10, \$9 per 100.

\***Sir Thomas Lipton.** Warm red, yellow base; cup-shaped bloom of great substance. Valuable both for outdoor planting and for forcing. Height 13 in. \$1.05 for 10, \$9.50 per 100.

**Van der Neer.** Large, brilliant violet-purple flower of fine form; splendid for outdoors, interplanted with forget-me-nots. Height 12 in. \$1.05 for 10, \$9.50 per 100.

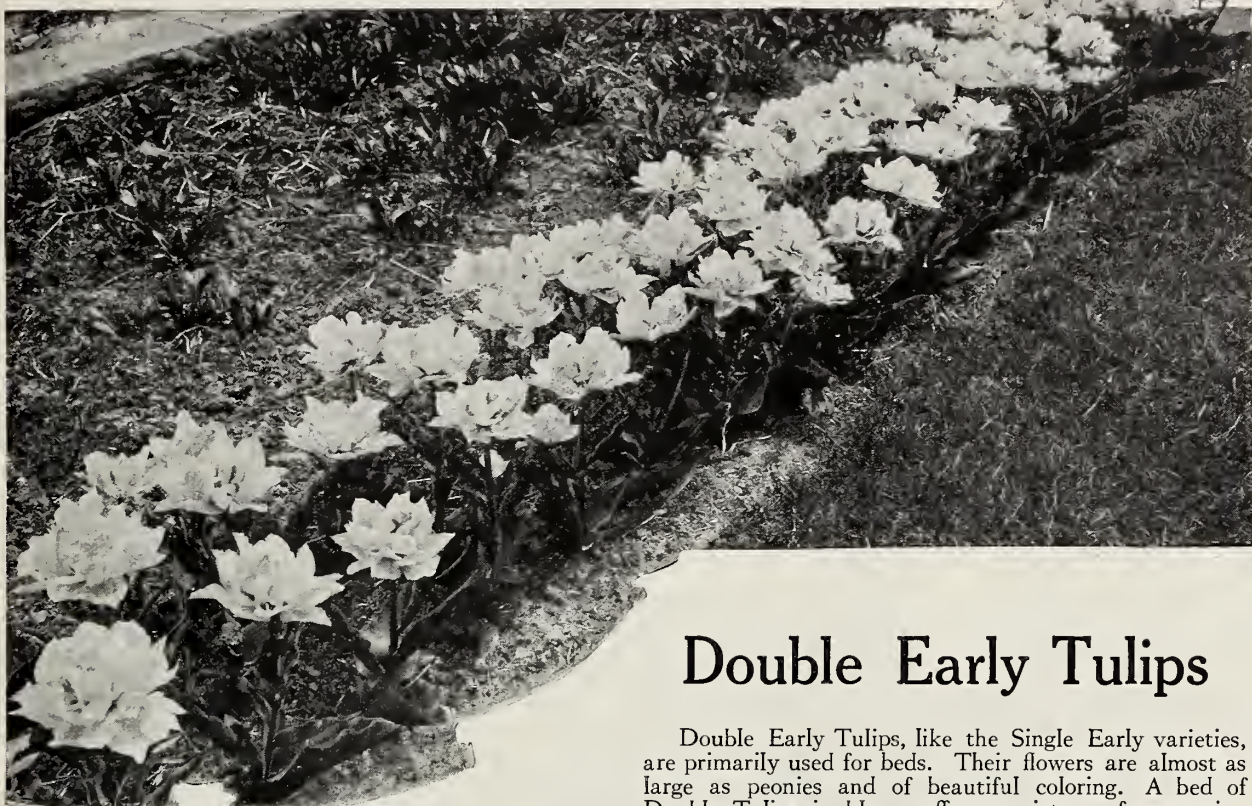
\***Vermillon Brillant.** Large, dazzling, vermilion-scarlet flower of fine form; extra good for early forcing. Height 13 in. 90 cts. for 10, \$8 per 100.

**White Beauty.** One of the finest white bedding Tulips and delightful for window-boxes and garden pots interplanted with yellow pansies. Height 12 in. \$1.20 for 10, \$11 per 100.

\***White Hawk.** Beautiful pure white of globular form; delicately crinkled petals. One of the finest white Tulips for beds or forcing. Lovely massed against Japanese quince bushes and interplanted with *Viola cornuta*, *Papilio*. Height 13 in. 80 cts. for 10, \$7 per 100.

**White Swan.** One of the most graceful early Tulips, delightful for cutting. Large, oval, pure white bloom on long stem. Charming planted with yellow Tulips near lilacs. Height 15 in. 75 cts. for 10, \$6.50 per 100.

**EARLY TULIPS IN MIXTURE,** of beautiful named varieties. 70 cts. for 10, \$6 per 100.



## Double Early Tulips

Double Early Tulips, like the Single Early varieties, are primarily used for beds. Their flowers are almost as large as peonies and of beautiful coloring. A bed of Double Tulips in bloom offers a picture of surpassing

grandeur. They are very persistent too, and a planting of them may be depended upon to be good for several years, although it is better, of course, to lift them when ripe and replant the larger bulbs at the proper time.

In planting beds with Double Tulips, care must be taken that the proper color combinations are used, since their colors are, in many cases, so intense that they easily clash, and thus two or three really beautiful varieties may make a very bad combination. It is with this knowledge in mind that we are presenting them in proper combinations so as to guard you against unpleasant results.

All of the combinations offered may be safely used and will make a bed of striking display.

Of course, any variety alone may always be used to great advantage. Nothing could surpass in beauty a bed planted solidly with the variety Emperor Rubrorum, Couronne d'Or, Schoonoord, Electra, or Murillo.

### "Top Quality" Bulbs of Double Tulips in Color Combinations

- |   |   |
|---|---|
| <ol style="list-style-type: none"> <li>1. <b>Azalea.</b> Beautiful dark rose. 90 cts. for 10, \$8 per 100.</li> <li>2. <b>Couronne d'Or.</b> Full, deep yellow flushed orange. A good bedding variety and splendid for forcing and cutting. Height 11 in. 95 cts. for 10, \$8.50 per 100.</li> <li>3. <b>Lucretia.</b> Deep pink. 75 cts. for 10, \$6.50 per 100.</li> <li>4. <b>Tea Rose.</b> The same lovely blending of pale yellow and soft rose as seen in many tea roses. Fine for forcing and splendid for planting out. Height 11 in. 75 cts. for 10, \$6.50 per 100.</li> </ol> <hr/> <ol style="list-style-type: none"> <li>1. <b>Vuurbaak.</b> Splendid scarlet Tulip, opening to brilliant orange-scarlet. Fine forcer and good for beds. Height 11 in. \$1 for 10, \$9 per 100.</li> <li>2. <b>Boule de Neige.</b> Large, pure white flower, resembling a white peony. A valuable variety for bedding and forcing. Height 10 in. 80 cts. for 10, \$7 per 100.</li> </ol> | <ol style="list-style-type: none"> <li>1. <b>Mr. van Tubergen.</b> Pure yellow. \$1.05 for 10, \$9.50 per 100.</li> <li>2. <b>Murillo.</b> Exquisite soft pink, with white markings. Makes beautiful beds and is the most easily forced. Height 11 in. 70 cts. for 10, \$6 per 100.</li> </ol> <hr/> <ol style="list-style-type: none"> <li>1. <b>Mr. van der Hoef.</b> This is, without doubt, the finest golden yellow Double Tulip for forcing. It is an exquisite flower, very full and large. This variety outlasted any of the others in our exhibits and should be grown as a pot-plant <i>par excellence</i> by all. 95 cts. for 10, \$8.50 per 100.</li> <li>2. <b>Rubra Maxima.</b> Deep scarlet. 95 cts. for 10, \$8.50 per 100.</li> <li>3. <b>Golden King.</b> A beautiful full variety in two tones of yellow. Lovely for cutting and for massing in the borders against early white-flowering shrubs. Height 13 in. \$1.10 for 10, \$10 per 100.</li> <li>4. <b>Cochineal.</b> Scarlet. 95 cts. for 10, \$8.50 per 100.</li> </ol> |
|---|---|



Brighten a corner of your garden with Double Tulip, Schoonoord, interplanted with light blue pansies

## “Top Quality” Bulbs of Double Tulips in Color Combinations, continued

- |  |   |
|--|---|
| <ol style="list-style-type: none"> <li>1. <b>La Candeur.</b> White. 80 cts. for 10, \$7 per 100.</li> <li>2. <b>Queen of the Netherlands.</b> Blush. 90 cts. for 10, \$8 per 100.</li> <li>3. <b>Lord Rosebery.</b> Delicate pink. 95 cts. for 10, \$8.50 per 100.</li> <li>4. <b>Queen Emma.</b> Deep pink. \$1 for 10, \$9 per 100.</li> </ol> <hr/> <ol style="list-style-type: none"> <li>1. <b>Electra.</b> Magnificent, enormous flower; beautiful rose, feathered violet; a handsome novelty, unexcelled for exhibition purposes. \$1.20 for 10, \$11 per 100.</li> <li>2. <b>La Grandesse.</b> Large; soft rose, shaded white; one of the best for forcing. 85 cts. for 10, \$7.50 per 100.</li> <li>3. <b>Lord Beaconsfield.</b> Deep pink. 95 cts. for 10, \$8.50 per 100.</li> <li>4. <b>Rose d'Amour.</b> Delicate pink. 95 cts. for 10, \$8.50 per 100.</li> <li>5. <b>Peach Blossom.</b> Large, very double, bright pink flowers, flushed white. This magnificent variety created a sensation when first exhibited and well deserves the most careful attention. It is most effective for indoor decoration and lasts a long time cut or in pots. Should be purchased by all flower enthusiasts. Height 12 in. 95 cts. for 10, \$8.50 per 100.</li> <li>6. <b>Salvator Rose.</b> Deep rose. 95 cts. for 10, \$8.50 per 100.</li> </ol> | <ol style="list-style-type: none"> <li>1. <b>Imperator Rubrorum.</b> Finest scarlet. \$1 for 10, \$9 per 100.</li> <li>2. <b>Schoonoord.</b> Pure white. 80 cts. for 10, \$7 per 100.</li> </ol> <hr/> <ol style="list-style-type: none"> <li>1. <b>El Toreador.</b> Striking orange-scarlet Tulip, edged with yellow. Makes a splendid bed and forces well. Height 12 in. \$1.20 for 10, \$11 per 100.</li> <li>2. <b>Gloria Solis.</b> Red, bordered yellow. 85 cts. for 10, \$7.50 per 100.</li> <li>3. <b>Titian.</b> Red, bordered yellow. \$1 for 10, \$9 per 100.</li> <li>4. <b>Tournesol.</b> Red and yellow. 95 cts. for 10, \$8.50 per 100.</li> <li>5. <b>William III.</b> Orange-scarlet. 95 cts. for 10, \$8.50 per 100.</li> </ol> <hr/> <ol style="list-style-type: none"> <li>1. <b>Blue Flag.</b> Pure violet-blue. Very beautiful. \$1.20 for 10, \$11 per 100.</li> <li>2. <b>Yellow Rose.</b> Golden yellow. The finest. Sweet-scented. 80 cts. for 10, \$7 per 100.</li> </ol> <p>The two varieties in this combination are both very much later, flowering at the same time as the Darwin Tulips. They should therefore be planted together. The combination is quite unsurpassable as the colors are exquisite and go very well together.</p> |
|--|---|



EDMEE



PHILIPPE DE COMINES



JOHN RUSKIN



PANORAMA



KING HAROLD



PRINCESS ELIZABETH



ORANGE KING



SCARLET PERFECTION



DREAM



LOUIS XIV



PARISIAN YELLOW



BRONZE QUEEN

# VARIETY BOX

## *Superlative Tulips*

Contains twelve varieties as here shown in color; 5 bulbs of each, 60 in all. They are put up separately, properly labeled, and packed in our special Variety Box as shown below.

The price per box, sent postpaid to your door is

**\$3.75**

Most of our clients are acquainted with our Variety Box of the previous years and know the splendid quality bulbs used. This new Variety Box for 1930 contains even finer sorts than any we included before. We have made the box to contain 60 bulbs instead of 100, for the reason that we found that most people preferred a smaller number of bulbs. The price is also correspondingly lower.

You have a very economical purchase in our Variety Box, the regular value of the 60 bulbs being \$4.70.

In the event of your being able to use two Variety Boxes we shall be glad to make up a special box of 120 bulbs, 10 of each variety, for \$7.25, postpaid.



**SCHENLEY GARDENS, Inc.**  
*Cheswick, Pa.*



Paper-White Narcissus

## Paper-White Narcissus

*Narcissus tazetta alba*

For growing in the house, nothing is easier to handle. The bulbs may be planted in a dish with pebbles and water, or in soil or sand, or in hyacinth glasses with water alone. It is best to place them in a cool, dark place for two to three weeks before bringing them to the light and heat. Be sure that it is cool, otherwise they will make spindly, long yellow leaves and will hardly flower, but if they are kept cool for three weeks they will form roots and when brought into warmth, they will grow and bloom nicely without any trouble. A few bulbs may be put in a bowl at one time and the rest kept dormant in a cool, dark place for future use. Thus you may have flowers the whole winter.

Mammoth size bulbs, 90 cts. for 10,  
\$8 per 100

One of Numerous UNSOLICITED  
Comments on Our Paper-White Bulbs

SCHENLEY GARDENS *Buffalo, N. Y.*

*Dear Sir:* I would like to take this opportunity to tell you about the Narcissus (Paper-White) bulbs I bought from you last fall. So far, all have blossomed, one bulb having three flower-stalks. I have had bulbs from different places for several years but never have had such good results as from your bulbs.—MRS. CHESTER LOESCHER.

## Freesias

SEEDLING FREESIAS IN MIXTURE containing all shades of pink and rose; all shades of lavender, blue and mauve; all shades of yellow and orange, and white. 70 cts. for 10, \$6 per 100, \$55 per 1000.

IMPROVED PURITY. White. Finest flowering bulbs. 70 cts. for 10, \$6 per 100, \$55 per 1000.

### Culture of Freesias

The soil should be a light, sandy loam; old soil is the best, in which some other crop has been grown during the previous season. This may be enriched with well-decayed stable or sheep manure. The best time to plant is August; if planted earlier they will come up uneven for the reason that the bulbs will not have had sufficient rest.

To produce the largest and finest flowers they should be grown *cool*; a day temperature of 60 degrees and night temperature of 45 to 50 degrees suits them best. They like plenty of water at all times, especially if they are subjected to high temperature.



Purity Freesias





## Narcissus (Daffodil)

**F**LOWER of legend and poetry, famed and fabled for ages, the Narcissus or Daffodil is the first important garden flower of the spring. Everyone knows them. Everyone loves them.

The splendid modern varieties are finer by far than the old-time "Daffydil," or "Easter Lily," over which gardeners used to hover anxiously the last weeks of March.

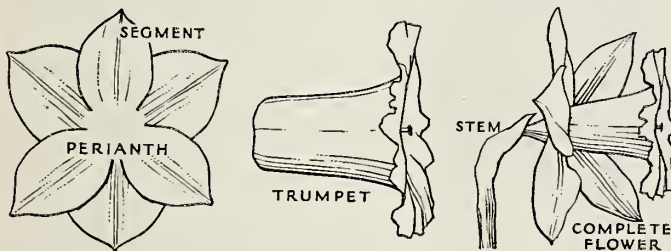
Giant gold and white flowers with enormous flaring trumpets replace the small flowers of yesteryear, and dainty Leedsi, Incomparabilis, and Poeticus varieties exist in bewildering beauty.

Our Narcissus have exceptional blooming quality. Even small bulbs split from large ones bring forth flowers, while our select quality usually produces three or four flowers per bulb.

Since the European bulbs were barred from this country a few years ago, American-grown Narcissus have proved much better than was expected. With one or two exceptions, the effort to grow them has been successful.

Being assured of a dependable source of American-grown Narcissus, we have enlarged our offerings and we hope to add to our list from year to year as other varieties become sufficiently plentiful so that they may be sold reasonably.

### Approved Classification of the Daffodil (Narcissus) to indicate the type of flower one may expect from the varieties we offer



A Daffodil has two distinct features in each flower, namely the perianth and the trumpet (sometimes called chalice or crown). The perianth consists of the large, prominent outer petals which form the back of the flower. The trumpet, chalice, or crown, as the case may be, arises from the center of the flower and is more or less tube-like. It surmounts the stamens and pistils. As an illustrative example, we present the three drawings shown here.

Differences among Daffodils arise from variations in the size and shape which the trumpet, chalice, or crown may take. Thus we are able to recognize ten species or races, as follows:

- I. **Trumpet.** Trumpet as long or longer than the perianth segments.  
In this class belongs:
  - A. **Ajax Yellow.** Perianth and trumpet yellow.
  - B. **Ajax Bicolor.** Perianth white; trumpet yellow.
  - C. **Ajax White.** Perianth and trumpet white.  
The most widely known examples of the above are A, Emperor; B, Empress; C, Sulphur Beauty.
- II. **Incomparabilis.** In this species the trumpet, chalice, or crown measures from one-third to nearly equal the length of the perianth segments. The most widely known example of it is the variety Sir Watkin.
- III. **Barri.** The trumpet, chalice, or crown of this species measures less than one-third the length of the perianth segments. The most widely known example of this class is the variety Conspicuous.
- IV. **Leedsi.** Comprising all the white or cream Narcissus with a trumpet, chalice, or crown measuring less than the length of the perianth segment.
- V. **Cyclamineus hybrids.** Practically unobtainable.
- VI. **Triandus hybrids.** To this species belongs the Hoop Petticoat Daffodil (*Bulbocodium citrinus*) which is now practically unobtainable, but of which there is a fine example in the *Bulbocodium conspicuus*, recommended for the rock-garden.
- VII. **Jonquilla hybrids.** Bunch-flowered Daffodils with delightful fragrance and rush-like foliage.
- VIII. **Tazetta and Tazetta hybrids.** To this species belongs the Poetaz Narcissus. These have a number of florets to each stem. Each floret is a miniature short-cupped Daffodil. They are very fragrant in contrast with other species of Narcissus. The most widely known example of this species is the variety Aspasia.
- IX. **Poeticus.** Comprising all the Narcissus with a pure white perianth and a very flattened, widely expanded, saucer-shaped crown. The most widely known example is the variety Ornatus.
- X. **Double Daffodils.** In this species the trumpet consists of a number of petals, shaped to resemble a rose or carnation or peony. The most widely known example of this species is the variety Orange Phoenix.



### Narcissus Incomparabilis

This class contains the largest red-chaliced varieties.

**Autocrat.** Perianth and cup deep sunny yellow; pointed petals. A very free-flowering, excellent variety for cutting and especially valuable for mass effect in naturalized woodland plantings. \$1.95 for 10, \$18.50 per 100.

**Bernardino.** Perianth cream-colored; the frilled and fluted cup stained deep apricot-orange. A magnificent flower borne on 22-inch stems. Very good hardy grower which forms nice clumps in the garden in a short time. Earned several awards of merit. \$2.50 for 10, \$24 per 100.

**Lucifer.** A lovely glowing orange, fluted cup, surrounded by long, flowing white petals, makes this a showy messenger of spring. Of decidedly cheerful appearance in the border, in woodland meadows, or in bowls and vases, it has rapidly become a standard variety in the catalogues. It bears gentle forcing. Who can forget the huge, perfect pans of it at the New York flower shows, with three to five flowers per bulb? \$1.35 for 10, \$12 per 100.

**Sir Watkin.** Large, light yellow perianth; deep yellow crown. A giant-flowering variety for the garden and naturalizing. \$1.95 for 10, \$18 per 100.

**Will Scarlett.** A rather informal cream-colored perianth, supporting a fine cup, exquisitely frilled, of wonderful orange-scarlet. Holds its color nicely and is persistently hardy. \$3 for 10, \$29 per 100.



Narcissus Incomparabilis, Bernardino

### Narcissus Barri

This group comprises the most brilliant red-chaliced varieties.

**Albatross.** White perianth; pale lemon cup with finely frilled edge of glowing orange-red. \$2 for 10, \$18 per 100.

**Blood Orange.** Lemon petals with vivid orange-scarlet eye. Sometimes called a yellow Poeticus, but much brighter than any other flower of that class. \$1.50 for 10, \$13 per 100.

**Conspicuous.** Perianth yellow; broad, short cup, edged orange-scarlet. Reliable for naturalizing. Free-flowering. \$1.20 for 10, \$10 per 100.

**Firebrand.** The combination of creamy white petals and glowing red, fluted cups really suggests live bits of coal resting on sheer, inflammable material. Not inferior to any of the most expensive in brilliancy. Very free-flowering when established a year or more. \$1.80 for 10, \$17 per 100.

**Masterpiece.** Creamy white, rounded perianth; flattened crown, heavily stained orange-scarlet. About 23 inches in height, flowers posing well above the foliage. \$2.40 for 10, \$22 per 100.

**Red Beacon.** Ivory-white perianth; brilliant orange-scarlet cup. Later than Red Chief but superior in form and color. \$3 for 10, \$28 per 100.

**Seagull.** Large, spreading, pure white perianth; cup canary-yellow, edged apricot. Very charming. \$1.60 for 10, \$15 per 100.

### Narcissus Leedsii

All large handsome flowers of pale yellow or white shades.

**Crystal Queen.** Pure white perianth; pale primrose cup, passing to clear white afterward. Flowers normally 3½ inches across, on long stems. Opinions differ about the merits of the various straight-cupped Giant Leedsii, but to us, taking size of bloom, form, color, length of stem, and health into consideration, Crystal Queen is the best of that price group. It faces forward, even slightly upward when in full bloom, and is usually present at the big shows in the prize-winning entries. Strong bulbs. \$3.20 for 10, \$30 per 100.



NARCISSUS LEEDSI, continued

**Evangeline.** A delightful citron-yellow cup, resting on a firm, rounded, pure white perianth. Stems 20 inches long. Free bloomer. Not new but still rated as one of the very best all-purpose varieties. Produces four to eight flower-stems the second and third year, and therefore is almost indispensable along woody paths and in open spaces between trees. \$1.35 for 10, \$12 per 100.

**Lord Kitchener.** Pure white perianth, very broad and flat, of heavy texture; crown pale primrose, wide open. A fluted carving of fine ivory. Exhibition variety. \$1 each.

**Mrs. Langtry.** Very satisfactory white variety for naturalizing. \$1 for 10, \$9 per 100.

**Queen of the North.** Broad, overlapping white segments; pale primrose cup with finely crinkled edges. A little different from White Lady and much better for naturalizing as it is dwarfer and has stronger stems. Produces flowers in great abundance when established. \$1.65 for 10, \$15 per 100.

**Southern Gem.** Pure white petals; large lemon-yellow crown turning cream-colored within a few days. Of splendid size and texture, this flower suggests a roguish informality, both in the flare of the petals and in the wide, serrated brim of the crown. Once established in the garden, it produces four to eight flowers the second and third year, therefore it is a reputation builder for the seedsman who sells it. Being very free-flowering and easy to force, a few bulbs in a shallow, 5-inch pan make a handsome showing. This is a variety that does not absolutely require deep pots like most other Narcissus. Strong bulbs. \$2 for 10, \$18 per 100.

**Salmonetta.** Very pretty dwarf Leedsii with white perianth and salmon-tinted cup. A sweet, free-flowering little thing with a definite character due to the unusual tinting in the cup. Fine for the base and the slope of rockeries. Now very rare and scarce. \$2.75 for 10, \$26 per 100.

**White Lady.** White perianth; pale canary-yellow cup with a delicate perfume. A flower not unlike a small *Eucharis grandiflora*; extremely hardy and free-flowering. About 22 inches in height. Once established it never gives up, supplying more flowers every year. \$1.35 for 10, \$12 per 100.



Narcissus Leedsii, Lord Kitchener

Narcissus Poeticus

Poet's Narcissus

**Horace.** Pure white perianth; conspicuous red eye. A splendid, free-flowering, strong-stemmed, forcing variety. This and Thelma are the two most outstanding Poets. \$1.50 for 10, \$14 per 100.

NARCISSUS POETICUS, continued

**Laureate.** One of the largest Poets. Petals quite fleshy and nicely overlapping; cup broadly edged deep crimson-scarlet. A little later than Horace and not quite so tall. We would place this with the outdoor show flowers. \$1.85 for 10, \$17.50 per 100.



## Narcissus Poeticus, continued

**Ornatus.** White perianth; cup margined red. Early. Double-nosed bulbs. \$1 for 10, \$9 per 100.

**Recurvus.** The "Pheasant's Eye" of the English; the "Narcisse des Poetes" of the French since time immemorial. The Romans, 2000 years ago, attached spiritual value to the flowers and ascribed great medicinal properties to the roots. Its beauty and perfume still charm many gardens all over the civilized world. One of our hardiest Narcissus, persisting cheerfully where other kinds give up. It is the parent of many beautiful hybrids, but none of them possessing to the same degree that useful quality of persistent hardiness of the old *Recurvus*. \$1 for 10, \$9 per 100.

**Thelma.** Snow-white perianth, petals overlapping; cup light yellow, edged bright crimson. A noble flower and consistent prize-winner at the shows. Has a fascinating perfume. \$1.80 for 10, \$17 per 100.

## Narcissus Poetaz

The demand for these satisfactory hybrids of *Ornatus* × *Polyanthus* is again increasing steadily, as before the quarantine. And deservedly so, for there is no better group of *Narcissus* for indoor culture in pots and in bowls, while their hardiness outdoors, often questioned, leaves nothing to be desired if planted on time. There is now plenty of color and variety in this class.

**Aspasia.** Far superior to *Elvira*, having more florets per stem, the perianth purer white, and it is larger. For forcing, *Aspasia* is greatly to be preferred. There are larger stocks of *Elvira* than of *Aspasia*, although these varieties are of about the same age, but *Elvira* is a more rapid propagator and therefore more profitable to the grower. We have a wonderfully vigorous stock of *Aspasia*. \$1.75 for 10, \$16 per 100.

**Elvira.** Pure white; yellow eye. Bears three or four large flowers per stem. Fine for midseason forcing. \$1.75 for 10, \$16 per 100.

**Helios.** Creamy yellow perianth; pure yellow cup. Fine, very floriferous, and excellent cut-flower variety. It is early and has strong stems with five to eight large florets. This variety was a favorite in the New York and Boston markets before the quarantine. We can again offer these bulbs at pre-quarantine price. \$1.75 for 10, \$16 per 100.

**Laurens Koster.** Pure white perianth; orange-yellow cup. A popular florist's variety with five to seven blooms per stem. \$1.75 for 10, \$16 per 100.

**Mignon.** White perianth, sharply contrasted by the bright orange-scarlet edge of the cups. A very striking variety with four or five florets per stem. \$3 for 10, \$28 per 100.

**Orange Cup.** Creamy white perianth; conspicuous orange cup—a most delightful color combination of plastic rubies floating on sulphur pools. Bears six to eight florets, and usually two stems per bulb. Keeps its color in bright sunlight positions. \$1.90 for 10, \$18 per 100.



Narcissus Poeticus, Thelma

For large masses of bloom the Poetaz Narcissus cannot be surpassed.



## Double Narcissus

**Albo-Pleno Odorato.** Pure white blooms with the delightful fragrance of orange blossoms, borne on strong stems. Blooms very late and seems to prefer a cool soil and semi-shaded position. In some situations the buds blast every year or the flowers come single; then again whole patches can be found near old homesteads in New York and Connecticut which produce masses of excellent double flowers every season. \$1.80 for 10, \$17 per 100.

**Golden Phoenix.** Light yellow, with deep golden yellow center. \$1.80 for 10, \$17 per 100.

**Orange Phoenix.** Double flowers made up of rows of snow-white petals which seem to be held in place by lacy ribbons of yellow and bright orange. True, pure stock is now quite scarce. We are, fortunately, in possession of a splendid pure strain. \$1.50 for 10, \$14 per 100.

**Sulphur Phoenix.** Identical with Orange Phoenix except that the interlacing is pale yellow passing to white. When full blown, this makes a scintillating snow-white flower of splendid form and size. It is often called Silver Phoenix. \$1.75 for 10, \$16 per 100.

**The Pearl.** A dwarf little mite with much character. The silvery perianth protects a neatly formed center of prettily curved, wavy petals of campernel color. Grows about 10 inches high, and one has to bend down to appreciate its value, but placed in a rockery pocket at eye-level or a little lower "it speaks its piece with eloquence." \$2 for 10, \$19 per 100.

**Von Sion (Telemonius plenus).** Short-stemmed, double, yellow. In great favor for Easter pans. \$1.70 for 10, \$16 per 100.

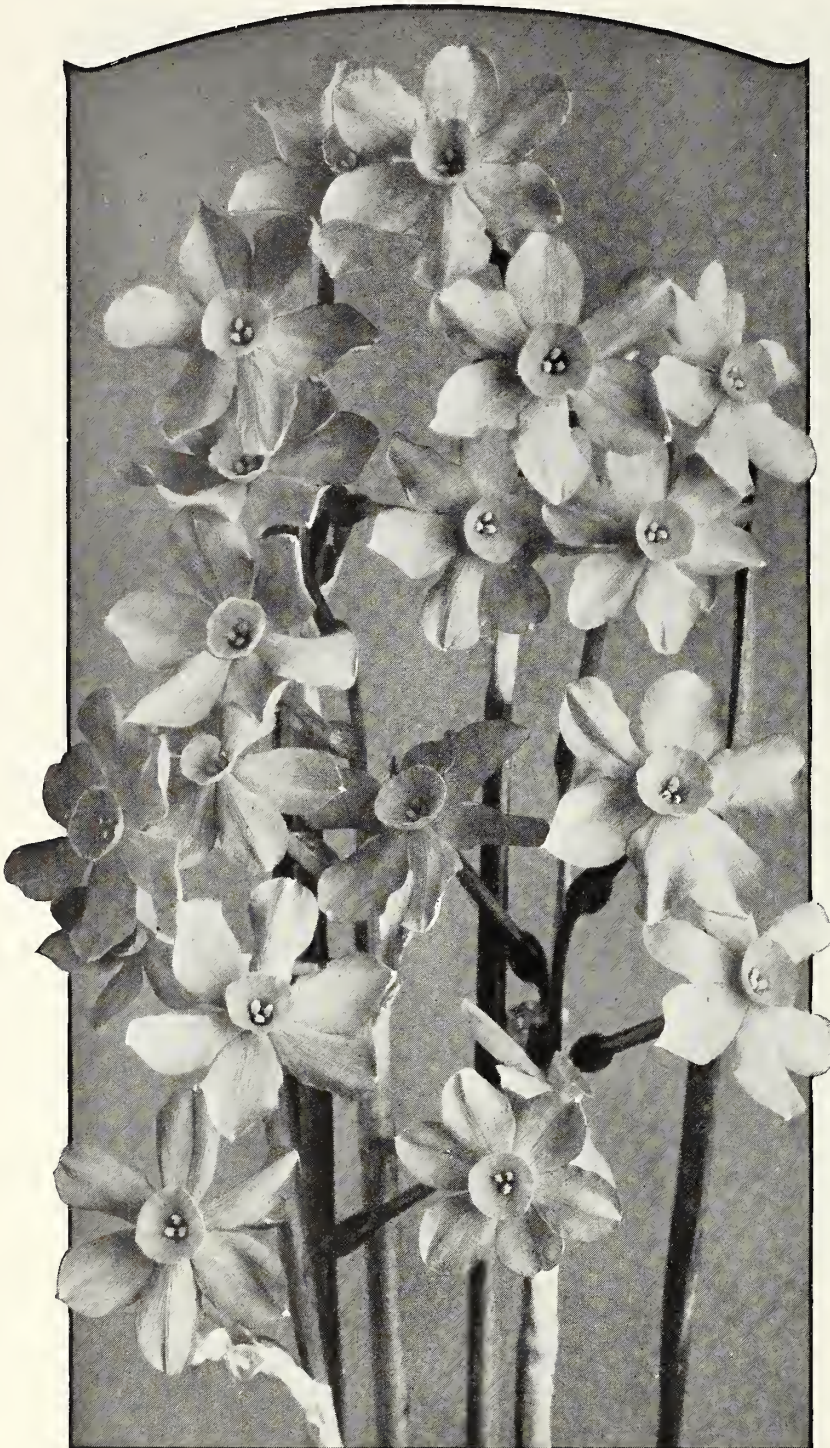


Double Narcissus, Sulphur Phoenix

## Jonquilla and Campernels

**Single Jonquil (*Jonquilla simplex* or Sweet-scented Jonquil).** The original true Jonquil of ancient history. This graceful species is native of southern France. Its perfume calls one to the spot where it raises its lovely clusters of three to eight golden yellow florets. No other flower, except perhaps the violet, adds such delightful fragrance to the spring garden. It is hardy

everywhere and has pretty rush-like foliage. Campernels are often furnished instead of the true Jonquilla, but this is unnecessary, for the sweet Jonquilla luxuriates in our soils and produces bulbs much larger than used to come from Holland. Very effective in deep pockets near the base of rockeries and in perennial borders. \$1 for 10, \$9 per 100.



Single Jonquils

Notice that Jonquils are small flowers, fragrant and usually produced in clusters, and not the large yellow trumpet type which are mistakenly called Jonquils by many people.

**Jonquilla and Campnells**  
continued

- Double Jonquil.** As the name implies, a double form of the Single Jonquil, very charming but a little less fragrant. \$1.25 for 10, \$11 per 100.
- Single Campnel** (*Narcissus odorus*). Also native of southern France, bearing two to five soft yellow florets, delightfully fragrant. Larger than the sweet Jonquilla. This original species is still planted in large numbers for its grace and perfume. It has been used to some extent by hybridizers with good results, as our list indicates. \$1.25 for 10, \$11 per 100.
- Campnel Plenus.** Very fine, double, beautiful golden yellow form, with two to four florets per stem. \$1.25 for 10, \$11 per 100.
- Campnel, Orange Queen.** This form is of that tint of yellow which, although not an orange, strongly suggests that shade. It is larger than its parent and of firmer texture. \$1.50 for 10, \$14 per 100.
- Campnel Rugulosus.** Well-known, early improvement of the parent form, stronger and deeper yellow. \$1.25 for 10, \$11 per 100.
- Campnel Giganteus.** The finest and best of the hybrids. Size, perfume, and foliage are superior to any of the preceding forms. A very fine, fragrant, cut-flower variety, as its clusters are impressive, a dozen stems making a very nice-looking bunch. Forces readily and early. \$1.75 for 10, \$16 per 100.

**Trumpet Daffodils**

- These have large trumpets equal in length or longer than the perianth segments. They may be all yellow or yellow and white.
- Aureole.** Soft lemon-yellow perianth; bright yellow trumpet of great size. Blooms superbly poised on long stems. Exhibition variety. 75 cts. each.
- Emperor.** The "yard-stick" of repute by which all other yellow trumpet varieties are measured. \$1.75 for 10, \$16 per 100.
- Empress.** The "yard-stick" of repute in bicolors. Unfortunately, good stocks are getting scarce. \$1.75 for 10, \$16 per 100.
- King Alfred.** (Yellow Trumpet.) Perianth and trumpet rich golden yellow. This is a truly royal representative of this class. The perianth is very large and of thick substance, and the trumpet is carried upward at an angle as though it would thus emphasize its superiority to all the other trumpet Daffodils. It is elegantly ruffled, and the edge is reflexed backward almost an inch, like a cornucopia. \$2.50 for 10, \$24 per 100.



## Narcissus Cut-Flower Mixture.

liberal planting of these lovely flowers.

A splendid mixture of many varieties, all suitable for successful naturalization, in extra-heavy bulbs. The price has been put low to induce

\$1 for 10 bulbs, \$8.50 per 100 bulbs, \$35 per 500 bulbs, \$60 per 1000 bulbs

### Trumpet Daffodils, continued

**Mrs. E. H. Krelage.** This variety is best described as the White King Alfred. An excellent propagator, producing large, sound bulbs. Easy to force. Long-stemmed flowers. Has no rival at the shows. Exhibition variety. \$1.50 each.

**Olympia.** (Yellow Trumpet.) Perianth deep primrose; huge trumpet, expanding at the mouth, with ruffled edge. \$3 for 10, \$28 per 100.

**Robert Sydenham.** The superb, outstanding, heavily frilled trumpet of beautiful golden yellow, glittering as if sprinkled with gold dust, backed by the symmetrical, soft sulphur-yellow perianth, presents an unforgettable picture. The entire flower suggests rugged, proportionate beauty such as the Greeks loved to express in their masterful sculptures. Its length of stem and the quality of the foliage strengthen the first impression obtained from the blooms. Forces readily from February 1 on, is free-flowering and a good propagator. Entirely hardy. Belongs in every collection at the flower shows, where it is a consistent winner. \$4 for 10, \$38 per 100.

**Spring Glory.** Clean white perianth with long petals and long chrome-yellow trumpet with reflexed brim. Very scarce. \$1.95 for 10, \$18 per 100.

**William Goldring.** (Swan's Neck Daffodil.) Pale primrose, passing off white. Gracefully drooping flowers of medium size and not much substance, but blooming early and easily establishing itself in clumps in the border where it displays a charm all its own. Stock very limited. \$3 for 10, \$28 per 100.

**W. P. Milner.** Miniature white trumpet and perianth. Charming material for rockeries. There are other varieties for this purpose, but none of the small-flowering types are so eminently satisfactory under average conditions as W. P. Milner which seldom fails to establish itself and to bloom generously for years. Height, 11 inches. \$2.25 for 10, \$21 per 100.

**NOTE.**—As this catalogue goes to press, we are obliged to announce that *Narcissus bulbocodium* is still very scarce and is priced far beyond its value. We therefore do not offer it.



## Rock-Gardens

Climatic conditions in the United States differ so greatly from those of Europe, notably England and Holland, that few people here can hope to succeed with the many lovely little species of Narcissus which are used abroad to give color to the rock-garden in early spring. A few of these, however, if planted early in sheltered pockets, will do reasonably well for the average amateur. Fortunately, we also have a few other Narcissus, dwarf and graceful little mites which are much hardier than the tender species, and therefore ideal for our rockeries. The slender Salmonetta, with colorful cup, The Pearl, a charming small double form, the nodding William Goldring, and the still smaller W. P. Milner are gems for this work.

We recommend:

W. P. Milner	Salmonetta
William Goldring	Single Jonquils
The Pearl	Double Jonquils

Collection of 5 bulbs of each (30 bulbs in all), \$6

## Useful Suggestions

A bed of W. P. Milner and Muscari, Heavenly Blue, making a stunning ensemble.

A bed of Olympia, planted rather wide apart, spaces filled in with light blue pansies.

Narcissus, White Lady, and Scilla campanulata, Excelsior, along a warm cellar wall.

Closely planted bed of Muscari, Heavenly Blue, interspersed with widely spaced Narcissus, Autocrat.

A naturalized planting of all yellow Narcissus with the words "Welcome Springtime" in 6-foot letters formed of the white variety, Queen of the North.

Robert Sydenham planted on the northern edge of a small pond. The huge flowers will face the water and their reflection will create a superb view from the south side.

Any Daffodil planting can be greatly improved by scattering Muscari, Heavenly Blue, in small groups among the Narcissus.



Trumpet Daffodil, Robert Sydenham

**Special Plantings.** Where very large plantings are under contemplation, it is advisable to use separate varieties in solid patches, one variety gradually passing into another in order to obtain a harmonious ensemble. We shall be glad to make a special price on plantings which will use 1000 or more bulbs of each variety selected.





## Hyacinths

Long ago the Dutch people illustrated for us, in their quaintly patterned gardens, the fitness of the Hyacinth for filling geometrical beds with even surfaces of pure color. And so perfectly does the symmetrical flower play its stereotyped role of "bedder" that the idea of putting it to a more gracious and graceful usage seldom arises.

Yet Hyacinths are lovely planted in irregular drifts along the edges of the shrubbery, or in the garden borders, among such other spring flowers as arabis, aubrietia, forget-me-nots, alyssum, pansies, wallflowers, and English daisies. The clear opaque colors of the Hyacinths are of great value in creating spring color harmonies; especially is this true of the clean porcelain-blues that are not shown by any other plant of the season. Plant lavishly such a porcelain-blue variety as Grand Maitre in irregular colonies against a long line of golden forsythia and early-flowering spirea (*Spiræa Thunbergi*). And crowd between the groups of Hyacinths mats of snowy *Arabis alpina*, tufts of wallflower, purple pansies, and some long-stemmed,

early-flowering yellow tulips, and one has created a spring picture worth coming far to see.

Even ordinary bedding may be rendered much less stiff and commonplace if the Hyacinth bulbs are set about 9 inches apart and the spaces between planted with such spring-flowering plants as will bloom at the same time as the bulbs. A bed of great gaiety and beauty may be made with the fine pink Hyacinth, Moreno, and forget-me-nots. Other good combinations are dark blue Hyacinths (all of one variety) and pink English daisies; yellow Hyacinths and purple pansies; light blue Hyacinths with yellow alyssum; and white Hyacinths with forget-me-nots or any pretty spring flower.

Just as you come to us for your bulbs, because we are specialists, so do we go for our Hyacinths to one of Holland's oldest and most responsible bulb-growers, who has made a specialty of Hyacinths for three generations. The cream of his stock is selected for us during flowering time and this we furnish to our clients.

### Hyacinths for Forcing "Top Quality" Mother Bulbs

May we suggest that you grow Hyacinths in deep pots or pans, such as are commonly called "azalea pans"? To bring forth perfect flowers, the bulbs must have the best possible root-growth which the deeper pans insure. Plant only one variety in a pan and allow about ten weeks for the development of the so essential full set of roots. Never use new pots or pans unless you first soak them well in water.

All Forcing Hyacinths, 25 cts. each, \$2.25 for 10, \$20 per 100 bulbs

#### BLUE SHADES

- Czar Peter.** Fine truss with large, waxy bells of a light lavender-blue.  
**Dr. Lieber.** Very early; lavender-blue; heavy, perfect spike.  
**Duke of Westminster.** Large, deep purplish blue bells with white center.  
**Enchantress.** Full, long truss with large bells of a pale porcelain, tinted lilac, with lighter center.  
**Ivanhoe.** Bluest and most satisfactory dark shade; late-flowering.  
**King of the Blues.** Splendid, compact truss with fine, bright dark blue bells. Flowers late.  
**Perle Brillante.** Short, fat spike; a very pretty deep blue shade on the exterior of the bells.  
**Schotel.** Long, perfect truss; large bells of forget-me-not blue.

#### ORANGE SHADES

- Oranjeboven.** Prettiest and daintiest of all Holland Hyacinths. A true ladies' flower, resembling very much the Roman Hyacinth. This beauty is of a ruddy apricot color which appeals to all. One of the most charming of the orange-colored sorts.

#### WHITE SHADES

- Correggio.** Short, fat spike, with large waxy white bells. Very fine.  
**La Grandesse.** The finest and most showy pure white; long, full truss of perfect form, with fine waxy bells. Grand exhibition flower.  
**L'Innocence.** Great truss, with large, pure white bells.

#### YELLOW SHADES

- City of Haarlem.** Large, well-formed truss of a bright golden yellow. Fine exhibition flower.

#### ROSE SHADES

- Lady Derby.** Long, splendid truss, with large bells of a fine rose-pink.  
**Queen of the Pinks.** The pink form of King of the Blues. A lovely bright rosy pink.  
**La Victoire.** Well-filled truss; medium-sized bells of fine dark pink. Magnificent exhibition variety.

#### "Treated" or "Prepared" Hyacinths

By a process of artificial ripening, these bulbs will produce flowers two to three weeks in advance of the others and are therefore invaluable for early forcing. We offer in this class only three varieties that have proved eminently satisfactory. They may be had in bloom for Christmas.

- L'Innocence.** Large; pure white. 25 cts. each, \$2.25 for 10, \$20 per 100.  
**Moreno.** Fine rose-pink. 25 cts. each, \$2.25 for 10, \$20 per 100.  
**Schotel.** Beautiful forget-me-not blue. 25 cts. each, \$2.25 for 10, \$20 per 100.

#### French Roman Hyacinths

We ask our patrons to use only the finest and largest bulbs of this family, as they are the most satisfactory; we therefore offer only the largest size. White, Light Pink, or Light Blue. 20 cts. each, \$1.75 for 10, \$15 per 100.

#### Miniature Hyacinths

This unusually attractive class of Hyacinths for growing in pots or pans and so valuable for cutting, we offer in the three varieties which our experience has taught us to be the most satisfactory. The most graceful spikes.

- Arentine Arendsen.** Snow-white. \$1 for 10, \$9 per 100.  
**Gigantea.** Delicate rose. \$1 for 10, \$9 per 100.  
**Lord Balfour.** Violet-blue. \$1 for 10, \$9 per 100.



## Hyacinths for the Garden

Our Hyacinth specialist provides us with Select Quality bulbs most suitable for planting in the garden, in varieties producing flower-spikes not quite so long and "top-heavy," so that they will stand up in rough weather. Those with weak stems have been eliminated, and the following sorts have been carefully selected, having strong stems and being in every way most desirable for this purpose. They are also splendid for forcing.

All Garden Hyacinths, \$1.60 for 10, \$15 per 100

### BLUE SHADES

- Grand Maitre.** Strong, well-filled spike with large, deep porcelain-blue bells.
- King of the Blues.** Splendid compact truss with fine, bright dark blue bells.
- Queen of the Blues.** Clear porcelain-blue flowers; strong stems.
- Schotel.** Long truss; large bells of exquisite forget-me-not blue.

### WHITE SHADES

- La Grandesse.** Spike strong, with large, pure white bells.
- L'Innocence.** Strong truss with large, pure white bells of lovely texture.
- Correggio.** Stout spike with exceptionally large waxy white bells.

### ROSE SHADES

- Lady Derby.** Long, splendid truss, with large bells of a fine rose-pink.
- La Victoire.** Strong, stout spike, with medium-sized bells of a bright carmine-rose.
- Marconi.** Short spike on stout stem, with fine, bright deep rose bells; exquisite for groups.
- Ornament Rose.** A great beauty with deep blush, waxy bells.
- Queen of the Pinks.** A lovely bright rosy pink variety which is very popular.

### YELLOW SHADES

- City of Haarlem.** Large, strong truss of bright golden yellow. There are only a few good yellow Hyacinths and this is our choice among them.

When you order Hyacinths, kindly state whether for forcing or for garden planting, so that the correct material may be selected and packed for you by our specialist in Holland.



Crocus border in bloom



Muscari or Hyacinthus

## Bulbs Suitable for Naturalizing

### CROCUS. To Bloom in Early April

Specially Assorted Monster-Size Bulbs

	25	100
David Rizzio. Dark blue . . . . .	\$1 25	\$4 50
Maximilian. Pure porcelain-blue . . . . .	1 25	4 50
President Lincoln. Large, dark purple . . . . .	1 25	4 50
Purpurea Grandiflora. Purple. . . . .	1 25	4 50
King of the Whites. Largest white . . . . .	1 25	4 50
Lothair. White with blue stripes . . . . .	1 25	4 50
Mme. Mina. Light blue, striped white . . . . .	1 25	4 50
Sir Walter Scott. White, striped purple . . . . .	1 25	4 50

#### BLUE, WHITE, YELLOW, AND STRIPED VARIETIES MIXED

Mammoth sizes. Including the best only. \$1.25 for 25, \$4.50 per 100.

### LARGE YELLOW CROCUS

Monster-size bulbs. \$1.60 for 25, \$6 per 100.

First-size bulbs, usually sold as Mammoth, \$1.25 for 25, \$4.50 per 100.

No orders for less than 25 Crocus bulbs of a variety can be accepted

### Muscari • Hyacinthus

Most Muscari are a very useful and cheap material for the landscape architect and should be much more used for naturalizing.

Heavenly Blue. Bright sky-blue. This is the best and largest of the Grape Hyacinths. The bells are large and form a nice little truss. Splendid for growing in pots and for outside work. \$1 for 25, \$3.50 per 100, \$30 per 1000.

No orders for less than 25 Muscari bulbs can be accepted

All bulbs will come to you postpaid. This is a saving of about 40 cts. per 100—don't forget



## Choice Hardy Bulbs Suitable for Naturalizing

in the grass, for planting in clumps in your hardy borders, for edging walks or flowerbeds, or for planting among Tulips

Plant these bulbs freely in quantities among the grass, under trees, on banks, where their leaves need not be cut too early, and they will increase in numbers yearly and afford beauty for a lifetime.

### CHIONODOXA

	25	100	1000
Gigantea (Alleni). Light blue; white center . . . . .	\$1 25	\$4 00	\$35 00
Lucilæ (Glory-of-the-Snow). Light blue . . . . .	1 00	3 00	25 00
Sardensis. Deep blue . . . . .	1 00	3 50	30 00

The varieties Lucilæ and Sardensis are largely used for naturalizing  
No orders for less than 25 Chionodoxa bulbs are accepted

### Galanthus · Snowdrops

Nivalis (Single Snowdrop). \$1 for 25, \$3.50 per 100.  
No orders for less than 25 Snowdrop bulbs can be accepted

### Ixia

In splendid mixture of colors. \$1.25 for 25, \$4.50 per 100.  
No orders for less than 25 Ixia bulbs can be accepted

### Lily-of-the-Valley

*Convallaria majalis*

NOT READY BEFORE OCTOBER

Supreme pips for outdoor culture. \$1.25 for 25, \$4.50 per 100, \$10 per case of 250.

No orders for less than 25 Lily-of-the-Valley pips can be accepted

### Scilla

	25	100	1000
Sibirica. Sky-blue . . . . .	\$1 25	\$4 00	\$35 00
Sibirica alba. White . . . . .	1 25	4 00	35 00
Campanulata alba maxima. Large, pure white flowers . . . . .	1 00	3 50	30 00
Campanulata, Blue Queen. Large; bright blue. One of the best . . . . .	1 00	3 50	30 00
Campanulata, Rosy Queen. Soft lilac-rose; free-flowering . . . . .	1 50	5 00	45 00
Campanulata, Mixed. Splendid mixture . . . . .	1 00	3 50	30 00

No orders for less than 25 Scilla bulbs can be accepted

*The ideal sought in naturalizing bulbs is to make them look as if they belonged to the place—as if they grew there always. Accordingly, they must be planted in scattered groups, never in rows or in rectangular masses. The best way to get the desired effect is to spill the bulbs from the band or a basket and plant them where they fall.*

*Bulbs for naturalizing should be planted as early as possible in the autumn and, if practicable, on a gentle slope, which will insure good drainage for them. A southern aspect will insure an early display and is particularly desirable if the bulbs are planted under deciduous trees, so that they may bloom before the leaves come out on the trees and shade them too much.*

*The soil should be as fertile as possible, but it is wise not to use manure. Leaf-mold and bone-meal, worked into the ground, are better for the bulbs.*

WE GUARANTEE ALL BULBS SOLD BY US TO BLOOM TO YOUR ENTIRE SATISFACTION



Scilla campanulata



## Dutch Iris. Large-flowering Early Xiphiums

Beautiful *Cattleya* shades, suggesting orchids. Wonderful for cutting, opening nicely, even if cut in bud, and lasting a long time.

Plant in the early fall, about 3 inches deep, in sandy loam or rather light good ground.

Their flowering season begins June 15 in the climate of New York, but they will bloom much earlier in the South, and may also be forced with ease and made to bloom from January on.



Early Xiphium Iris

We sell only the largest size, 7 to 8 centimeters. Though more expensive than smaller bulbs, they are well worth it. The additional cost will come back to you in larger and more flowers.

Our bulbs are grown in the Northwest—Washington and Oregon—and are far superior to bulbs from any other source. Our own man selects the stock for us, insuring full value for your dollar.

**D. Haring.** Creamy white falls with attractive deep yellow blotch; standards silvery lavender—lovely colors that go well together in this large, handsome flower. About 2½ feet tall. Very choice. \$1 for 10, \$9 per 100.

**Hart Nibbrig.** Falls brilliant clear blue with golden blotch; standards a little deeper blue, giving much character to the entire flower. Excellent size. Early. A leading cut-flower variety. \$1.25 for 10, \$11 per 100.

**Imperator.** The all-round, finest, largest, and best Iris for all purposes. Strong grower, blooms freely, and makes fine, healthy bulbs that keep very well until late in the season. Porcelain-blue. 90 cts. for 10, \$8 per 100.

**Wedgwood.** Beautiful wedgwood-blue, large flower on strong, tall stalks. May be had in bloom end of January if planted in September in deep flats. Can be brought into 55 to 60 degrees Fahrenheit from November 15 on. \$2 for 10, \$19 per 100.

**White Excelsior.** Extra-large; snow-white; lips carry narrow feather of golden orange as if to accentuate the dominant coloring. Perfect form. Not quite as tall as we would like it but nearly 2 feet just the same. Rather early. First Class Certificate. \$1.50 for 10, \$14 per 100.

**Yellow Queen.** Uniform yellow of splendid height and size. Very early. Can be handled like Wedgwood if brought into the greenhouse from December 15 on. \$1.50 for 10, \$14 per 100.

## Companion or Ground-Covers for Tulips and Other Bulbs

**Forget-me-nots (*Myosotis*).** Exquisite as an underplanting for pink, white, and pale yellow tulips, and a good ground-cover after they have gone. \$2 for 10, \$18 per 100.

**Mertensia virginica (Bluebells).** Lovely clusters of drooping, pale blue bells. Fine with light pink or pale yellow tulips and daffodils. \$2.50 for 10, \$22 per 100.

**Rock Cress (*Arabis alpina*).** Pure white flowers in solid drifts—fine with daffodils and early tulips. Blooms too early to work well with Darwins and Breeders. \$2 for 10, \$18 per 100.

**Veronica repens.** A dense, carpet-like plant covered in late tulip-time with tiny points of brilliant blue. A wonderful little ground-cover and spreads rapidly. \$2.50 for 10, \$22 per 100.

**Viola cornuta (The Horned Pansy).** Exquisite, graceful flowers like large violets, in many colors. Combines well with tulips of all shades. \$1.75 for 10, \$15 per 100.



Planting of Ground-Covers in Tulip Beds



### Lilium regale

*Lilium regale*, also called *L. myriophyllum*, is one of the most beautiful and one of the hardiest Lilies in cultivation. It is a vigorous grower, with sturdy stems 4 to 5 feet high, densely covered with long, narrow foliage. The center of the flower is flushed with yellow, shading to white at the outer edges; externally the flower is shaded a wine-color which creates a delightful pearly tint on the inside through the almost translucent petals. It blooms in July. Thrives in any good garden soil, and is also excellent for rock-gardens. Stem rooting. Plant in fall or early spring, about 6 inches deep.

Only good strong bulbs should be planted as small bulbs are invariably disappointing; they will not bloom until the second year, if then, and sorely try one's patience.

The supply of our fine big bulbs is naturally limited, therefore do not delay ordering so that we may reserve for you. 55 cts. each, \$5 for 10, \$45 per 100.

### Lilium candidum (Madonna Lily)

#### The Six-petaled Chalice of Silver

This well-known and much-sought-for variety is considered one of the choicest of the Lily tribe and one of the surest to bloom. The trumpet-shaped blooms of immaculate white are borne in tiers or spikes on tall, rigid, leafy stems. When well established and happy, this Lily grows vigorously and multiplies into large clumps whose June beauty is unapproached by other plants at the time. The bulbs should be planted as early as possible in the autumn, because before winter comes they send up a cluster of leaves which stay green until spring when the flower-stalk shoots up from the center.

Selected French bulbs, field-grown.	22-	10	100
24 cm. (9-10 in.) circumference . . .		\$2 60	\$24 00
Mammoth-size bulbs.	27-29 cm. (11-		
12 in.) circumference . . . . .		3 75	36 00



Rose Anna

*They  
flower  
in early  
July*

## TEN OF THE FINEST JAPANESE IRIS AT A VERY SPECIAL PRICE

*Increas-  
ingly  
beautiful  
each year*

*Flowers gorgeous in color, the size of a dinner-plate*

PLANT THIS SPRING AS SOON AS WEATHER PERMITS

- .....**Azure.** Double. Immense flowers of a mauve-blue with yellow central blotch. 10 plants \$4.32 (regular price \$6).
- .....**Catherine Parry.** Double. Very large exquisite blue flowers, overlaid rosy red. 10 plants \$5.20 (regular price \$7.50).
- .....**Gold Bound.** Double. Huge pure white; flower of stunning appearance. The most beautiful white Japanese Iris. 10 plants \$3.36 (regular price \$4).
- .....**Jeannette Parry.** Single. White, suffused with light violet; stigmas amethyst-violet. Huge wavy flower of great beauty. 10 plants \$4.85 (regular price \$7.50)
- .....**Kuro-Kumo.** Double. Purple, overlaid deep blue, with yellow blotches. Extra-fine, large flower. 10 plants \$6.25 (regular price \$9).
- .....**Red Riding Hood.** Single. Amaranth-red, veined and suffused white. 10 plants \$2.64 (regular price \$3.50).
- .....**Rose Anna.** Double. Ruby-violet, with ivory-white lines and yellow blotch. Very beautiful, immense flower. 10 plants \$3.36 (regular price \$5).
- .....**Senjo-no-Hora.** Double. Purple, splashed gray-blue; light yellow blotches radiating out into a sky-blue. Extra large and fine. 10 plants \$6.48 (regular price \$9).
- .....**Taiheiraku.** Double. Rich purple, with conspicuous yellow blotches, tipped blue, radiating out into purple veins and feathers. 10 plants \$3.75 (regular price \$6).
- .....**Violet Beauty.** Single. Pansy-violet, with conspicuous yellow blotch in center. Large wavy flower of rich color. 10 plants \$5.80 (regular price \$9).

*Check any of the above varieties desired*

**10 PLANTS** ONE EACH OF THE ABOVE VARIETIES **\$4.75**  
100 PLANTS (10 OF EACH) \$40

POSTAGE PREPAID IF REMITTANCE ACCOMPANIES ORDER



## Color Schemes for Popular Forms of Flower Beds and How to Plant Them for Best Effect

### CIRCULAR BEDS

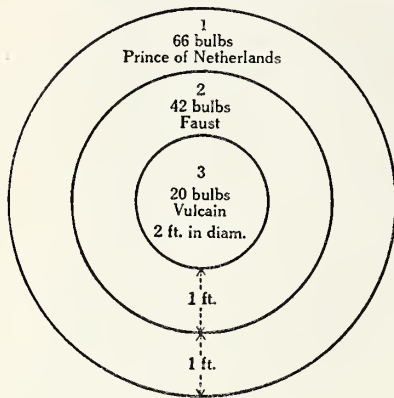


Figure A

These beds, 6 feet in diameter, will hold 128 bulbs if they are planted 6 inches apart each way, the proper spacing for fine display. We recommend the following varieties of Tulips to be used in combination and in the order given.

### FIGURE A

Central ring 2 feet in diameter; middle ring 1 foot wide; outer ring 1 foot wide

1. 66 Darwin Tulips, Prince of Netherlands (glowing cerise).
2. 42 Darwin Tulips, Faust (purple-maroon, extra fine).
3. 20 Breeder Tulips, Vulcain (apricot, shaded gold).

The price of the above Collection (128 bulbs) is only **\$9.50**

*In Ordering, Ask for Collection P*

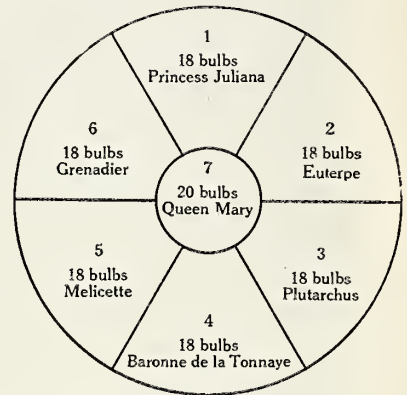


Figure B

### FIGURE B

Central ring 2 feet in diameter; remainder divided in six equal parts

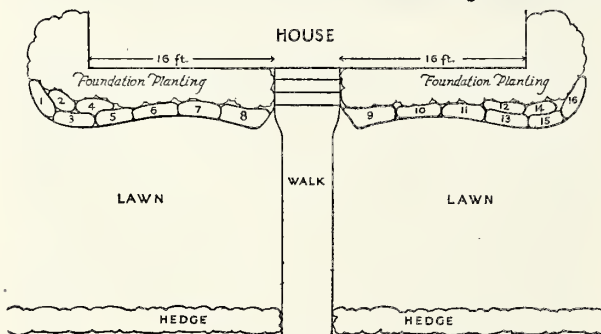
1. 18 Darwin Tulips, Princess Juliana (salmon-scarlet).
2. 18 Darwin Tulips, Euterpe (lavender).
3. 18 Breeder Tulips, Plutarchus (bronze, shaded lilac).
4. 18 Darwin Tulips, Baronne de la Tonnaye (deep pink).
5. 18 Darwin Tulips, Melicette (deep lavender).
6. 18 Breeder Tulips, Grenadier (beautiful glowing orange).
7. 20 Darwin Tulips, Queen Mary (stately; cerise-rose).

The price of the above Collection (128 bulbs) is only **\$9.75**. *In Ordering, Ask for Collection R*

The following planting-table for circular beds will be found useful in ascertaining the exact number of bulbs needed for your garden.

Diam.	No. bulbs	Diam.	No. bulbs	Diam.	No. bulbs	Diam.	No. bulbs
3 feet	30	6 feet	128	10 feet	325	16 feet	810
4 feet	50	7 feet	158	12 feet	456	18 feet	1020
5 feet	83	8 feet	206	14 feet	615	20 feet	1260

## How to Beautify the Entrance to Your Home with May-Flowering Tulips



These beautiful assortments of Tulips have become very popular because they satisfy the need of the home and bring happiness to children and grown-ups alike.

As large numbers of our clients seemed interested in just such plantings, we present a pretty one at a moderate cost.

If planted in clumps, as shown here, either in front of the shrubbery planting, or directly in front of the wall in case there is no shrubbery planting, they will give your home a very inviting and cheerful aspect.

Plant the bulbs when you receive them in the autumn. They are easiest planted with a trowel and should be placed 5 to 6 inches deep, and not less than 6 inches apart. It is best first to spade up a strip about 18 inches wide, removing stones, etc., and then plant them with a trowel in the loose soil. It can be completed in less than one hour.

### Collection No. 1A. Entrance to the Home

1. 10 Darwin Tulips, Clara Butt (salmon-pink).
2. 10 Darwin Tulips, Viking (deep blue).
3. 10 Cottage Tulips, John Ruskin (lavender flushed orange-rose).
4. 10 Darwin Tulips, Farncombe Sanders (scarlet).
5. 10 Darwin Tulips, Euterpe (lavender).
6. 10 Breeder Tulips, Bronze Queen (bronze).
7. 10 Darwin Tulips, Princess Juliana (carmine-rose).
8. 10 Cottage Tulips, Moonlight (pale yellow).
9. 10 Darwin Tulips, Prince of Netherlands (deep carmine).
10. 10 Cottage Tulips, Inglescombe Yellow (bright yellow).
11. 10 Darwin Tulips, Flamingo (shell-pink).
12. 10 Darwin Tulips, Queen Mary (deep pink).
13. 10 Breeder Tulips, Golden Bronze (lively bronze).
14. 10 Darwin Tulips, Dream (light blue).
15. 10 Darwin Tulips, Europe (glowing scarlet).
16. 10 Darwin Tulips, Melicette (lavender).

This collection, 160 "Top Quality" bulbs, postpaid. Very special, **\$12**



# Fine Lilies for Autumn

## ... Planting



**AUTUMN** is the proper time to plant all Lilies, but it is frequently midwinter before some of the imported types arrive from Japan, consequently they are usually carried in cold storage and delivered in early spring.

Of the Lilies which are grown in this country and imported in late summer, we offer the most useful for planting in the fall.

For planting directions we refer you to our book, "Lilies for Beautiful Gardens," described below.

**Lilium canadense.** The Meadow Lily. This is the beautiful wild Lily of the eastern United States and Canada. It grows nearly 6 feet tall and bears great sprays of bell-shaped, orange-red flowers spotted with brown. 25 cts. each, \$2.25 for 10, \$20 per 100.

**Lilium candidum.** This is the old-fashioned Madonna Lily of snowy whiteness and exquisite, delicate fragrance. It should be planted as early in autumn as possible because it must make a rosette of leaves before freezing weather. It blooms in June, with the delphiniums. Clean, healthy bulbs from the north of France. Ready in early September. 35 cts. each, \$2.60 for 10, \$24 per 100.

**Lilium elegans.** The large flowers are borne upright in candelabra-like sprays, in early summer. They are blazing orange-red, with showy spots of darker tint. It is one of the most effective Lilies for bright display, and extremely easy to grow. 25 cts. each, \$2.25 for 10, \$20 per 100.

**Lilium regale.** The Royal Lily. Slender, wiry stems, crowned with three to twelve immense, flaring

trumpets of waxy whiteness, inside suffused with yellow, and tinted with purple outside. The most popular and easiest of the white Lilies to grow. 55 cts. each, \$5 for 10, \$45 per 100.

**Lilium superbum.** The American Turkscap. Grows 6 to 9 feet high, with enormous, spreading clusters of brilliant red-orange flowers, sharply recurved, so that the petals touch the back of the bloom. Extremely showy, and easy to grow in the border if the base of the stems is protected with a mulch or a cover plant. Needs plenty of water. 25 cts. each, \$2.25 for 10, \$20 per 100.

**Lilium tenuifolium.** The Coral Lily. A charming, graceful little Lily, ideal for the rock-garden or at the top of a low wall. The slender, wiry stems are only a foot high or a few inches more, and bear graceful sprays of small, glittering scarlet flowers. 35 cts. each, \$3.25 for 10, \$30 per 100.

**Lilium tigrinum.** The Tiger Lily. Bold, handsome plants with leafy stems and large orange-red flowers spotted with dark brown. Well known, very popular, and extremely showy. 25 cts. each, \$2.25 for 10, \$20 per 100.

### LILIES FOR BEAUTIFUL GARDENS

**T**HIS is the title of a little book about Lilies which we are now preparing to help our customers in the cultivation of these charming ornaments of our gardens. The Lily family is very large, and each species varies more or less from every other in its cultural requirements. In this book we have discussed twelve of the most useful varieties very thoroughly and illustrated them with handsome pictures. Twelve other varieties are briefly described and hints given as to their care. Reliable information concerning Lilies is rare and scattered through many volumes, and we believe this little book will prove helpful in many ways. Do not fail to ask for your copy, 10 cents each; or free with an order for \$5 worth of Lily bulbs.

# Something Delightful for Our Patrons

**G**LORIOUS color! Rich crimson flowers, one bloom after another, from June till autumn frost. A single bulb will produce a half-dozen or more rich blossoms of the size illustrated, on sturdy stems 10 inches high. We are delighted to offer you this new *Anemone*, *Hollandia* by name, because we know you will be delighted with it.

Never was there such color among the Anemones before. Only "the poppy's ravishing red" can compare with it. Also, the Anemone has a light, delicate fragrance which is an added charm. For cut-flowers, nothing is finer.

And the price! We are glad to tell you that you may have a dozen perfect bulbs for \$1.50—a hundred for \$12—under a special arrangement that we are able to make just now.

The bulbs may be planted outdoors from September to May in well-drained soil. They prefer a semi-shady situation and do well planted on the north side of a fence or wall. Provide good drainage. The bulbs are unevenly formed, very hard, and about the size of a small crocus. They are perennial and will prove a permanent and very desirable acquisition. We can make delivery first week of September.

\$1.50 for 12, \$12 per 100



Copyright 1930, by Schenley Gardens, Inc., Cheswick, Pa.

ANEMONE HOLLANDIA. Natural Size

**SCHENLEY GARDENS, Inc. CHESWICK, PA.**